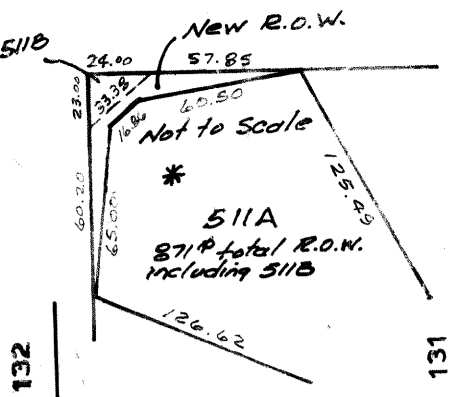


NW 1/4 SEC. 18 - T14N - R12E

SCALE: 1" = 200'



MILLARD HIGHLANDS SOUTH REPLAT



Note: Lots 48-52
are filed in the
NW 1/4 Sec. 18-14-13

* Lots 510 to 583 are in Millard Highlands
South Replat II

SARPY COUNTY SURVEYOR'S OFFICE
AUGUST ... 1976

- REVISED
- 5-05-77
- 12-4-78
- 2/13/79
- 5-6-86
- 4-16-87
- 5-12-87
- 1-13-88
- 2-07-91
- 2-25-91
- 6-5-91