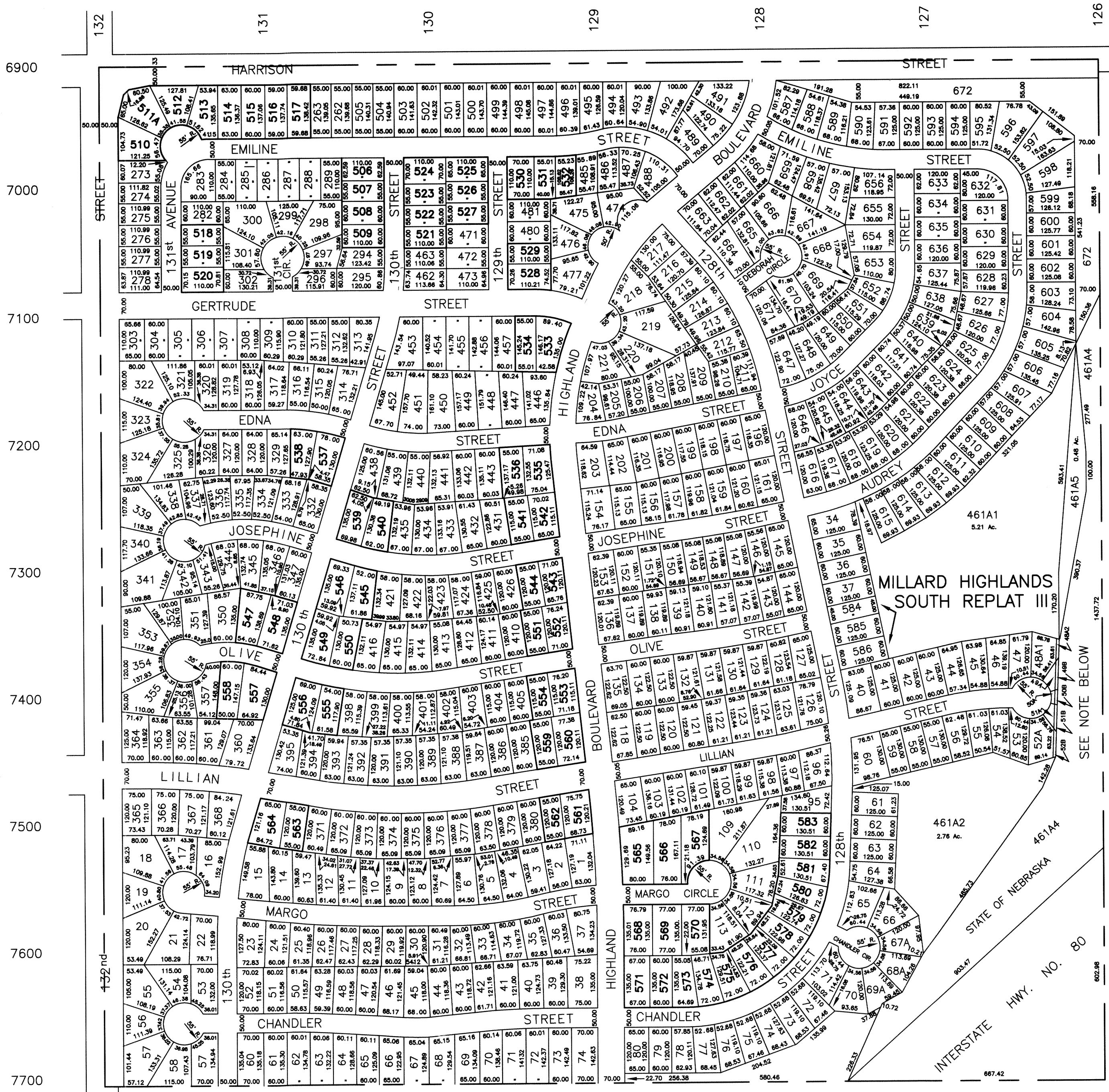


NOTICE

This map constitutes a representation based on information provided to the Sary County Surveyors Office by other individuals and organizations. Therefore no representations regarding the accuracy of the size, dimensions, measurements, condition, platting or location of the within described area are made. Should such information be required for construction, zoning or other purposes, the services of a private surveyor and/or title search should be secured.

NW1/4 SEC. 18 T14N- R12E
SCALE 1" = 200'

944



NOTE:
DIMENSIONS FOR LOTS 48 THRU 52
ARE FILED IN THE NW1/4 SEC. 18-14-12

MILLARD HIGHLANDS SOUTH
LOTS 1 thru 461 inclusive, except Replatted Lots

MILLARD HIGHLANDS SOUTH REPLAT

Lots 462 thru 509 inclusive

MILLARD HIGHLANDS SOUTH REPLAT II

Lots 510 thru 583 inclusive

MILLARD HIGHLANDS SOUTH 2nd PLATTING

Lots 1 thru 74 inclusive

MILLARD HIGHLANDS SOUTH REPLAT III

Lots 584, 585 & 586

MILLARD HIGHLANDS SOUTH REPLAT IV

Lots 587 thru 672 inclusive

REVISED

| | |
|----------|---------|
| 5- 5-77 | 2- 7-91 |
| 12- 4-78 | 2-25-91 |
| 2-13-79 | 6- 5-91 |
| 5- 6-86 | 1- 8-92 |
| 4-16-87 | 1- 8-92 |
| 5-12-87 | |
| 1-13-88 | |

