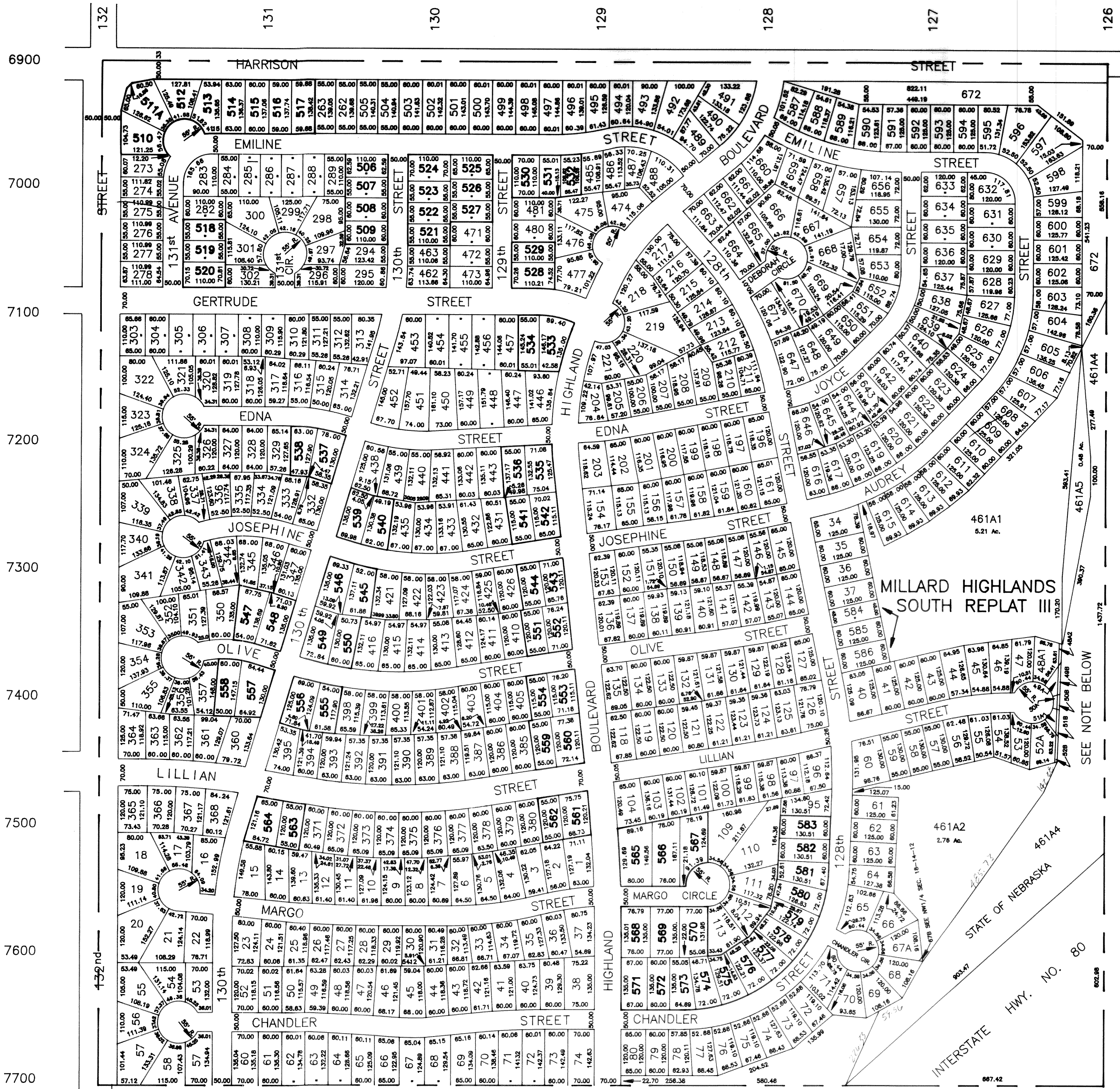


NW1/4 SEC. 18 T14N- R12E
SCALE 1" = 200'



MILLARD HIGHLANDS SOUTH
LOTS 1 thru 461 Inclusive, except Replotted Lots

MILLARD HIGHLANDS SOUTH REPLAT
Lots 462 thru 509 Inclusive

MILLARD HIGHLANDS SOUTH REPLAT II
Lots 510 thru 583 Inclusive

MILLARD HIGHLANDS SOUTH 2nd PLATTING
Lots 1 thru 74 Inclusive

MILLARD HIGHLANDS SOUTH REPLAT III
Lots 584, 585 & 586

MILLARD HIGHLANDS SOUTH REPLAT IV
Lots 587 thru 672 Inclusive

NOTE:
DIMENSIONS FOR LOTS 48 THRU 52
ARE FILED IN THE NW1/4 SEC. 18-14-12

SARPY COUNTY SURVEYOR
AUGUST 1976

REVISED

- 5- 5-77
- 12- 4-78
- 2-13-79
- 5- 6-86
- 4-16-87
- 5-12-87
- 1-13-88
- 2- 7-91
- 2-25-91
- 6- 5-91
- 1- 8-92

SEE NOTE BELOW