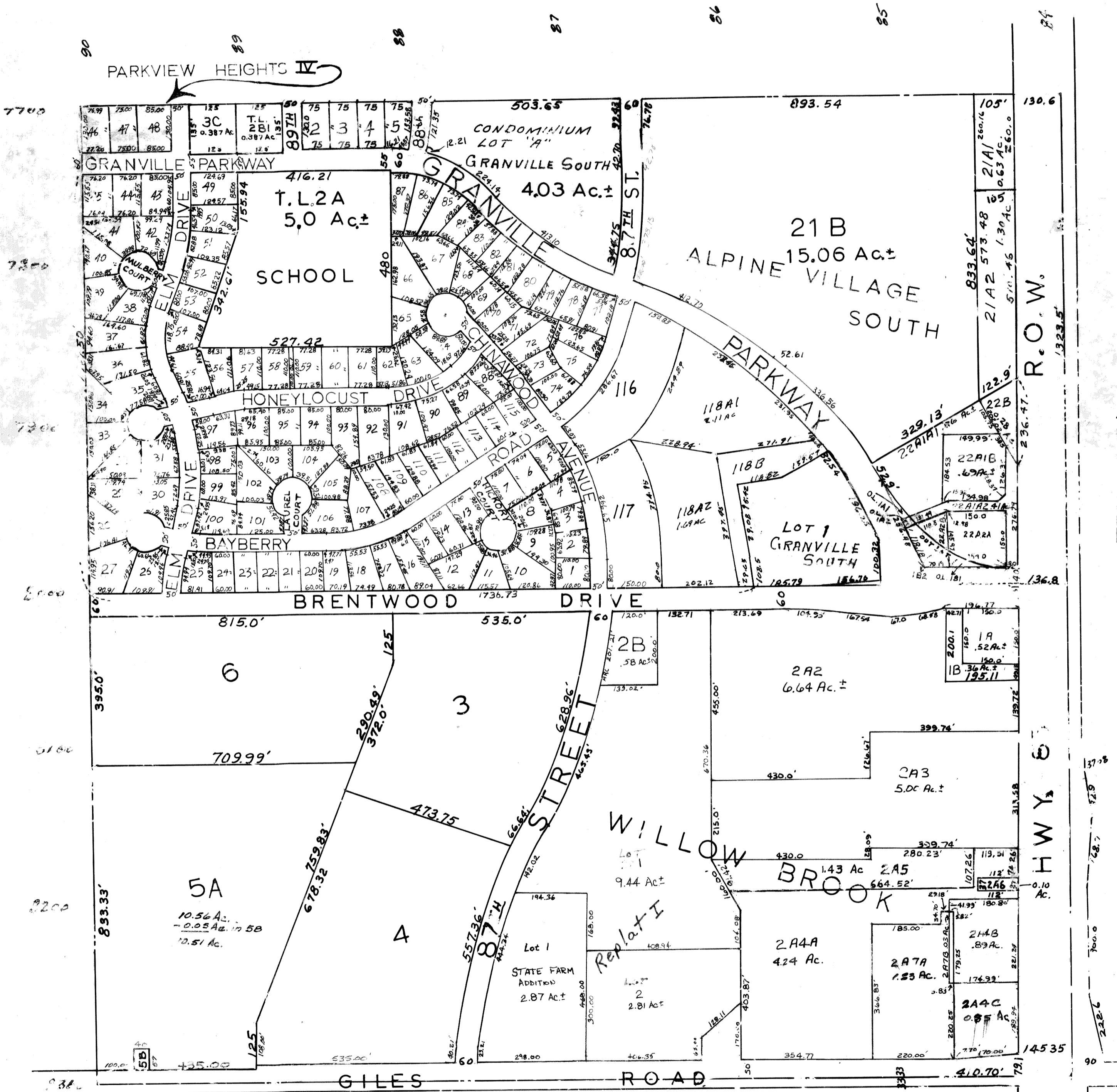


SE 1/4 SEC 15-T14N-R12E

Scale: 1" = 200'



SARPY COUNTY SURVEYOR'S OFFICE
NOVEMBER 1971

48-29-77 22A
 5-4-90
 9-10-91
 11-18-92
 1-4-93
 8-22-73
 10-13-76
 7-21-77
 11-17-78
 1-8-80