

ON THIS PAGE LOTS

683,684,685 & 686

853 THRU 872

884 THRU 901 & 990 THRU 1011

1440 THRU 1451

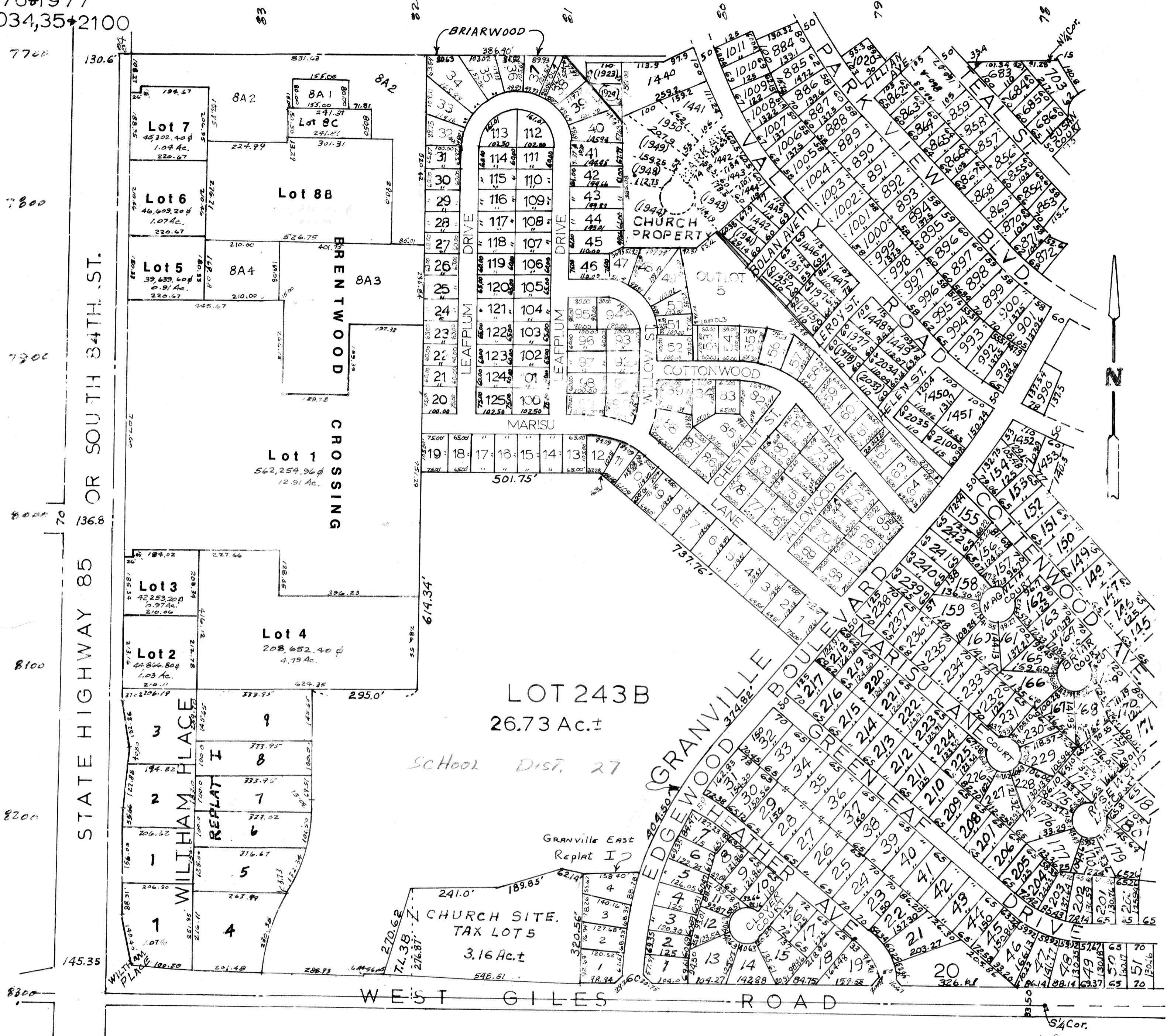
1942, 1950, 51 & 52.

1976 & 1977

2034, 35 & 2100

SW 1/4 SEC. 14-T14N-R12E

SCALE - 1" = 200'



SARPY COUNTY SURVEYOR'S OFFICE
OCTOBER-1963

- 3-5-93 5-24-72
- 3-11-94 1-9-74
- 2-25-98-PLAT 9-16-76
- 2-25-98-ROW 8-15-79
- 4-22-98 7-19-84
- 1-12-05-PLAT 1-15-87
- 12-31-90 12-31-90