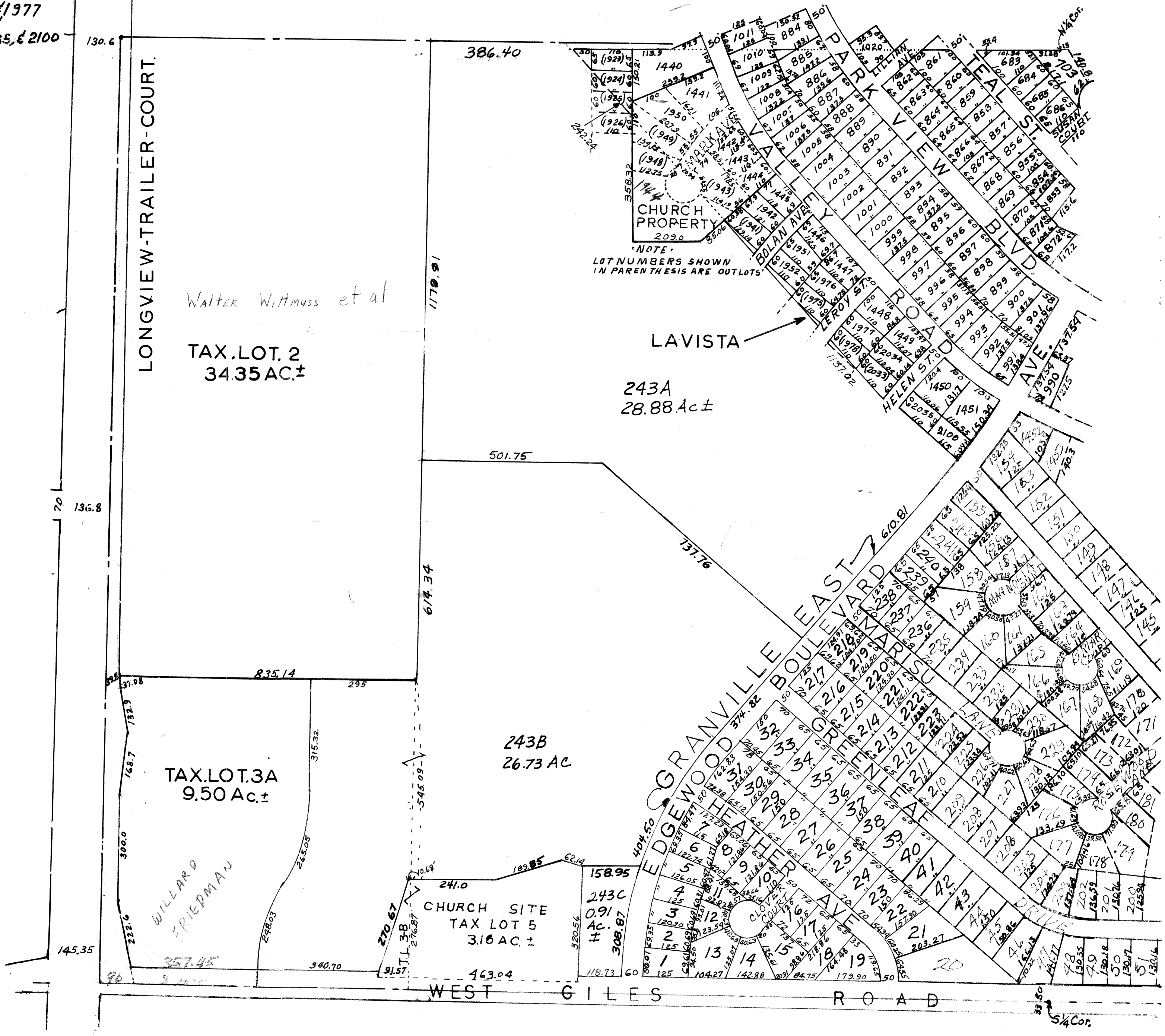


On This Page Lots  
 683, 684, 685 & 686  
 853 thru 872  
 884 thru 901 also 990 thru 1011  
 1440 thru 1451  
 1942, 1950, 1951, & 1952  
 1976 & 1977  
 2034, 35, & 2100

SW 1/4 - SEC. 14 T. 14 N. R. 12 E  
 SCALE: 1" = 200'



SARPY COUNTY SURVEYOR'S OFFICE  
 OCTOBER 1963