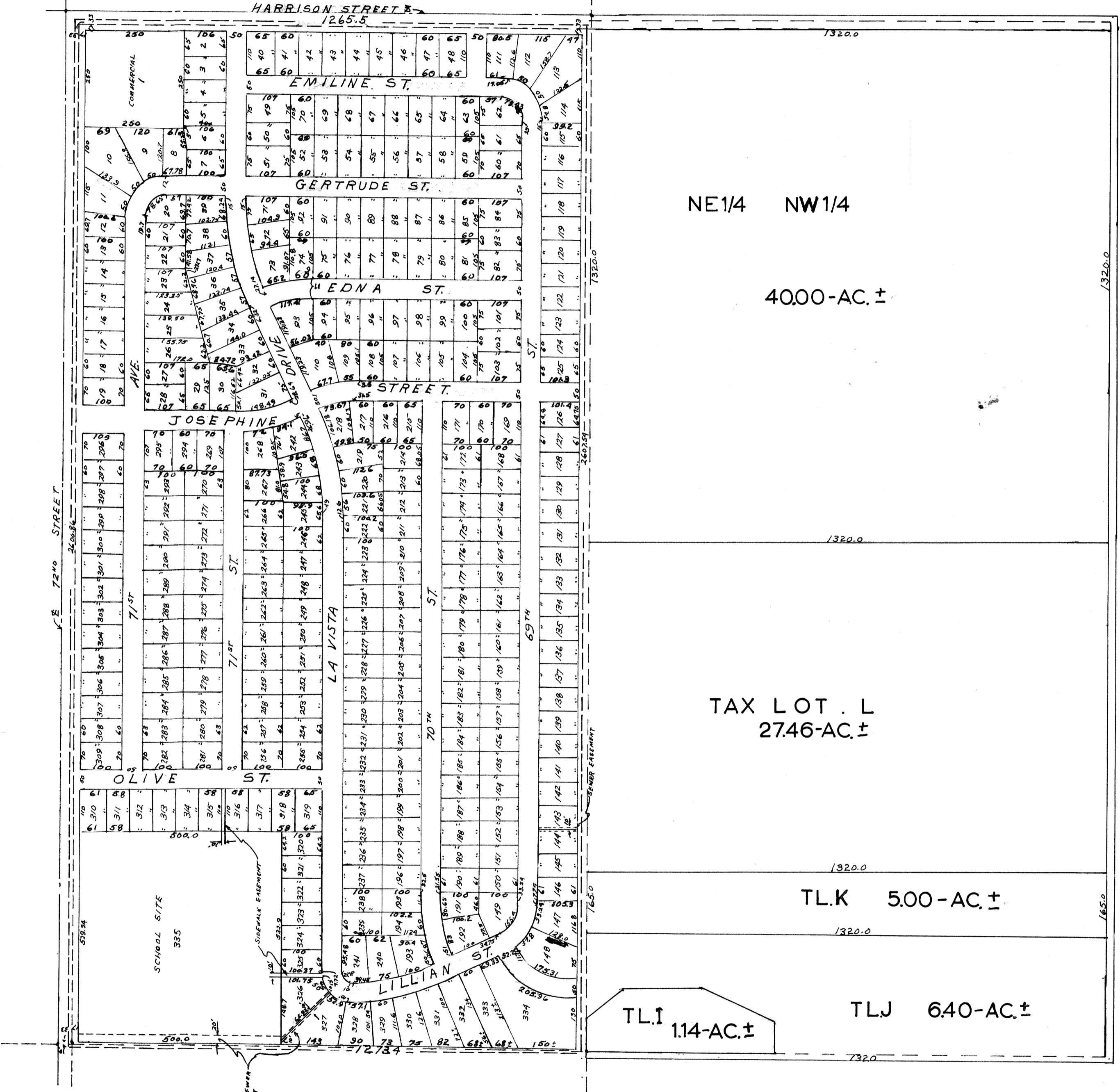


NW1/4 SEC.13 - T14N - R12E

LA VISTA REPLAT



SCALE: 1" = 200'



NE1/4 NW1/4

40.00-AC. ±

TAX LOT L  
27.46-AC. ±

TLK 5.00-AC. ±

TLJ 6.40-AC. ±

TLI 1.14-AC. ±

OFFICIAL PLAT  
SARPY COUNTY SURVEYOR'S OFFICE  
JUNE 1961  
F.I.W. N.P.W.

Handwritten notes: 1/20, 1/20, 1/20