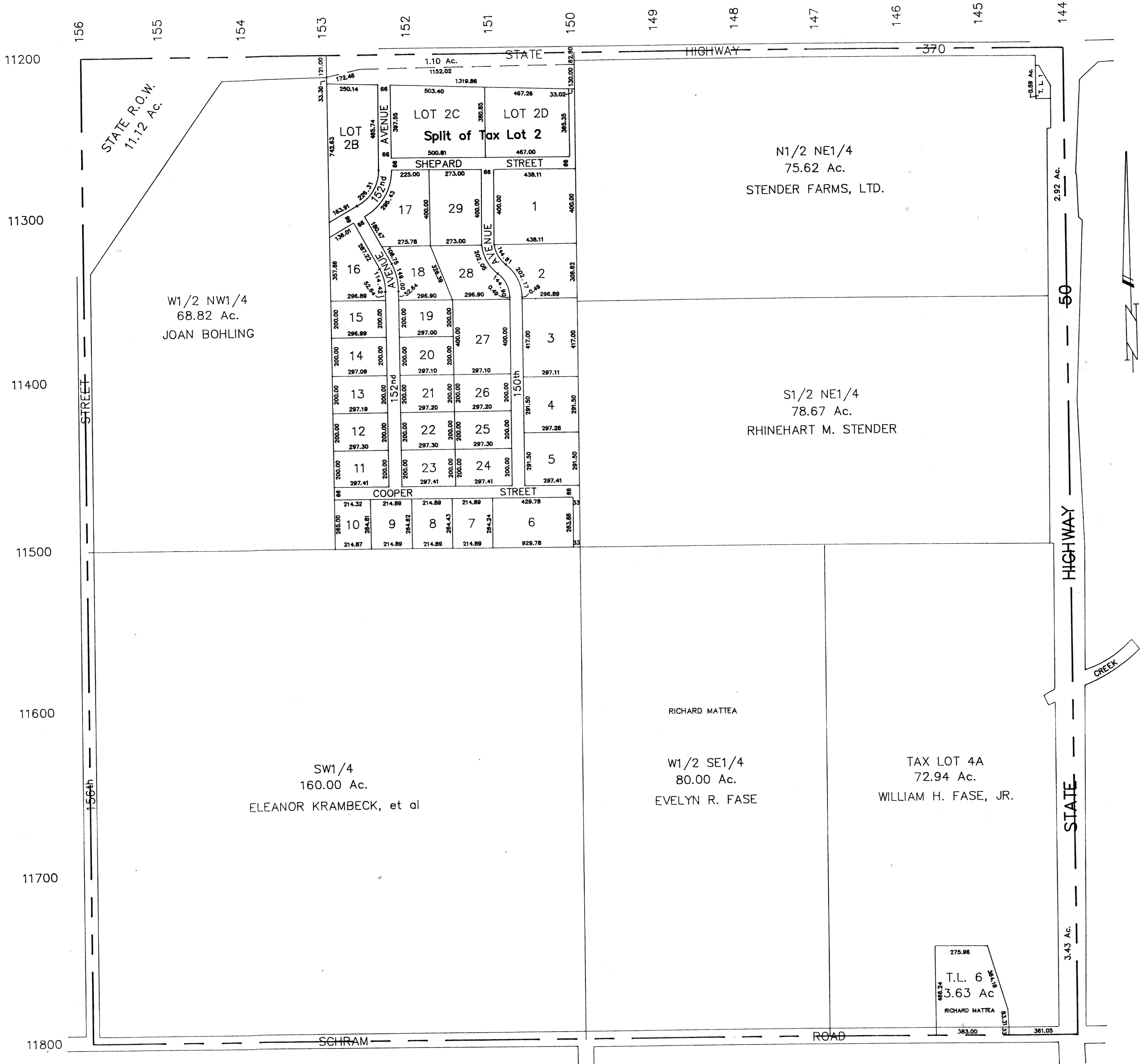


SEC. 35-T14N-R11E
SCALE 1" = 400'

RONALD A. RYSTROM
SARPY COUNTY SURVEYOR

2107-10



SARPY COUNTY SURVEYOR
JANUARY 1959

- REVISED
- JANUARY 1961
 - DECEMBER 1963
 - MARCH 1977
 - FEBRUARY 1983
 - SEPTEMBER 1983
 - MAY 1984