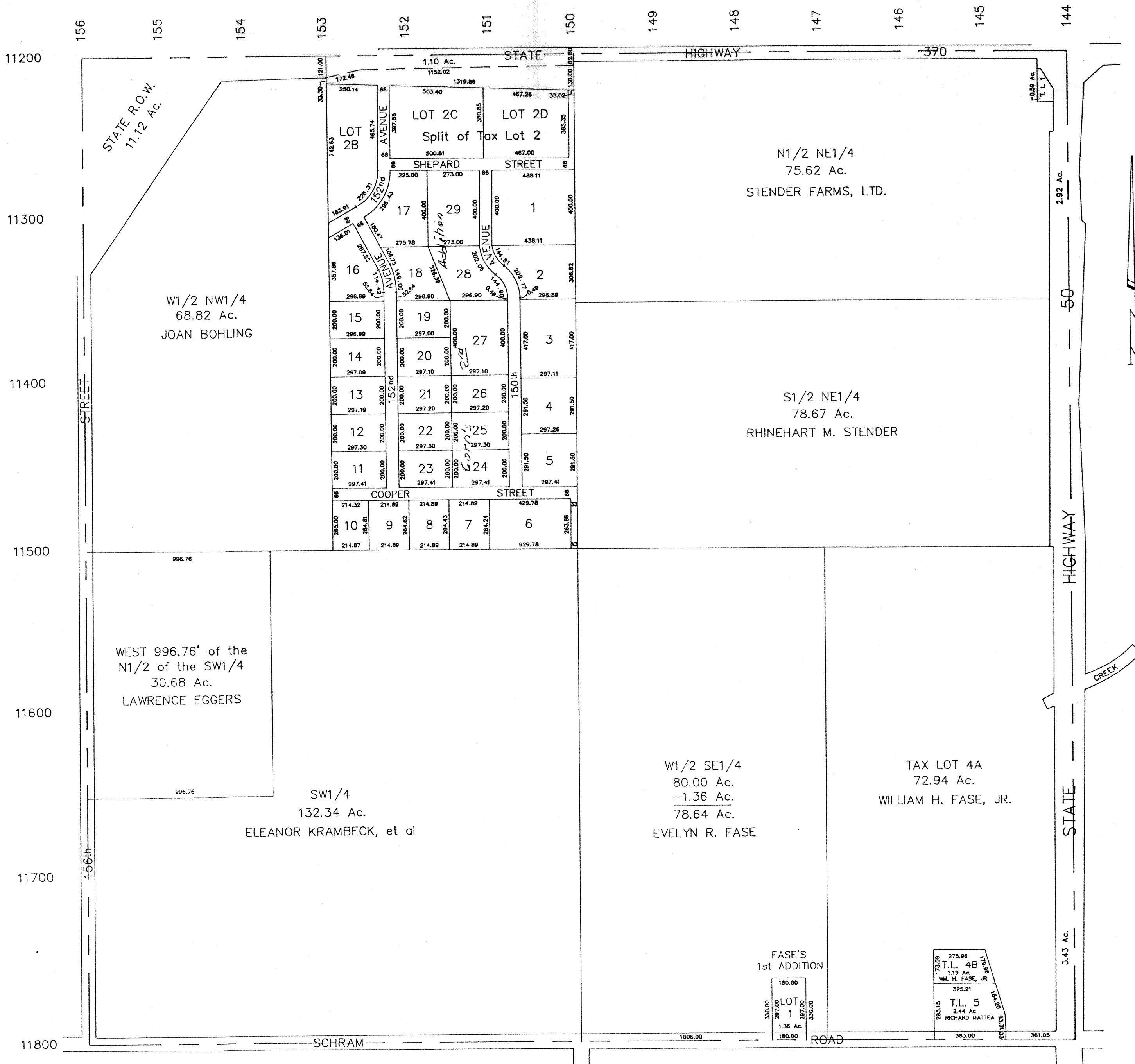


SEC. 35-T14N-R11E

SCALE 1" = 400'

2107-10



SARPY COUNTY SYRVEYOR
JANUARY 1959

REVISED

- JANUARY 1961
- DECEMBER 1963
- MARCH 1977
- FEBRUARY 1983
- SEPTEMBER 1983
- MAY 1984
- DECEMBER 1990
- JANUARY 1991
- FEBRUARY 1991