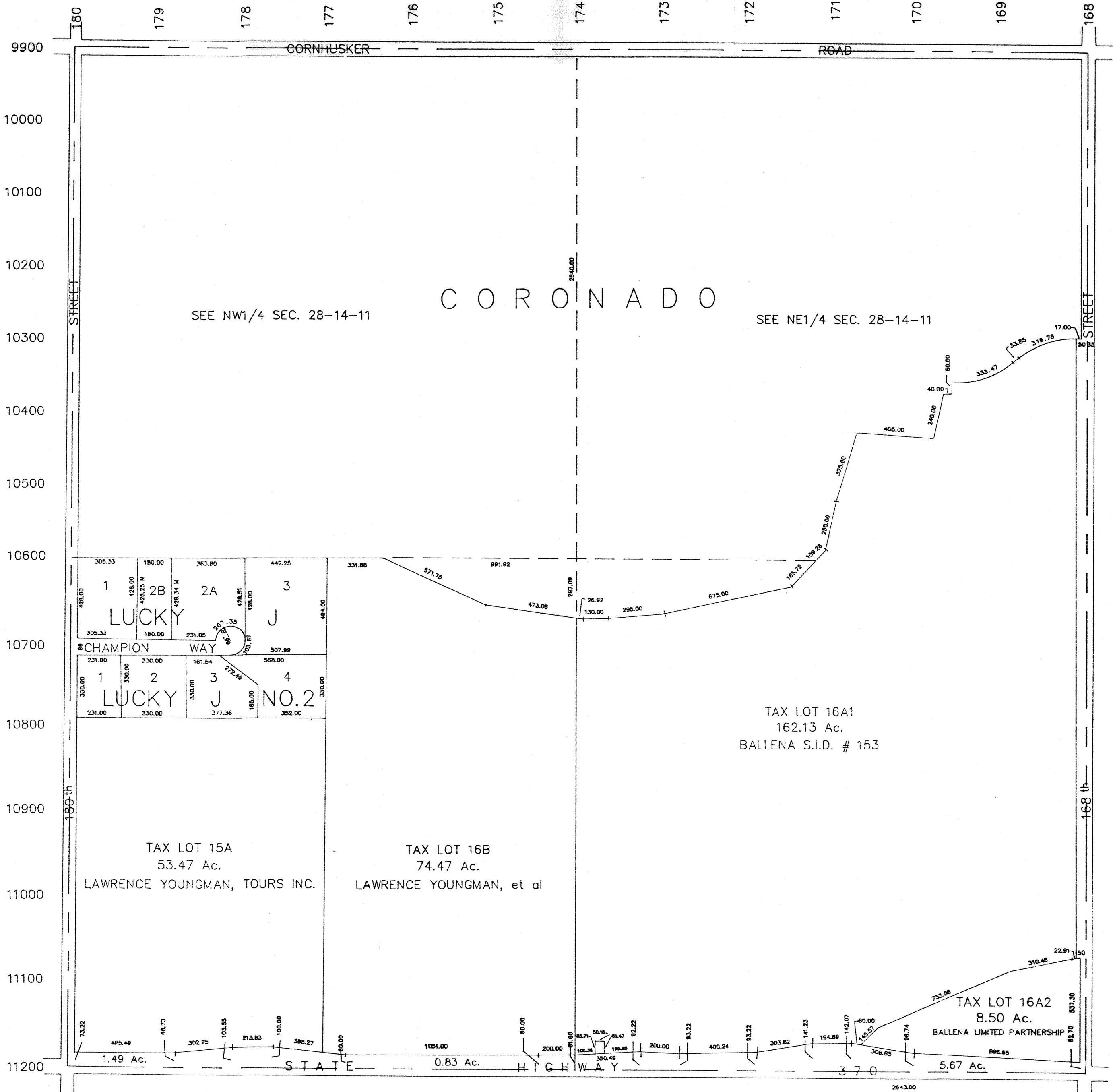


SEC. 28-T14N-R11E

SCALE 1" = 400'

927-30



SARPY COUNTY SURVEYOR
DECEMBER 1964

REVISED

- 3- 8-78
- 6- 5-79
- 9-10-81
- 8-31-83
- 8-24-89
- 1-24-90
- 2-11-91
- 12- 4-91