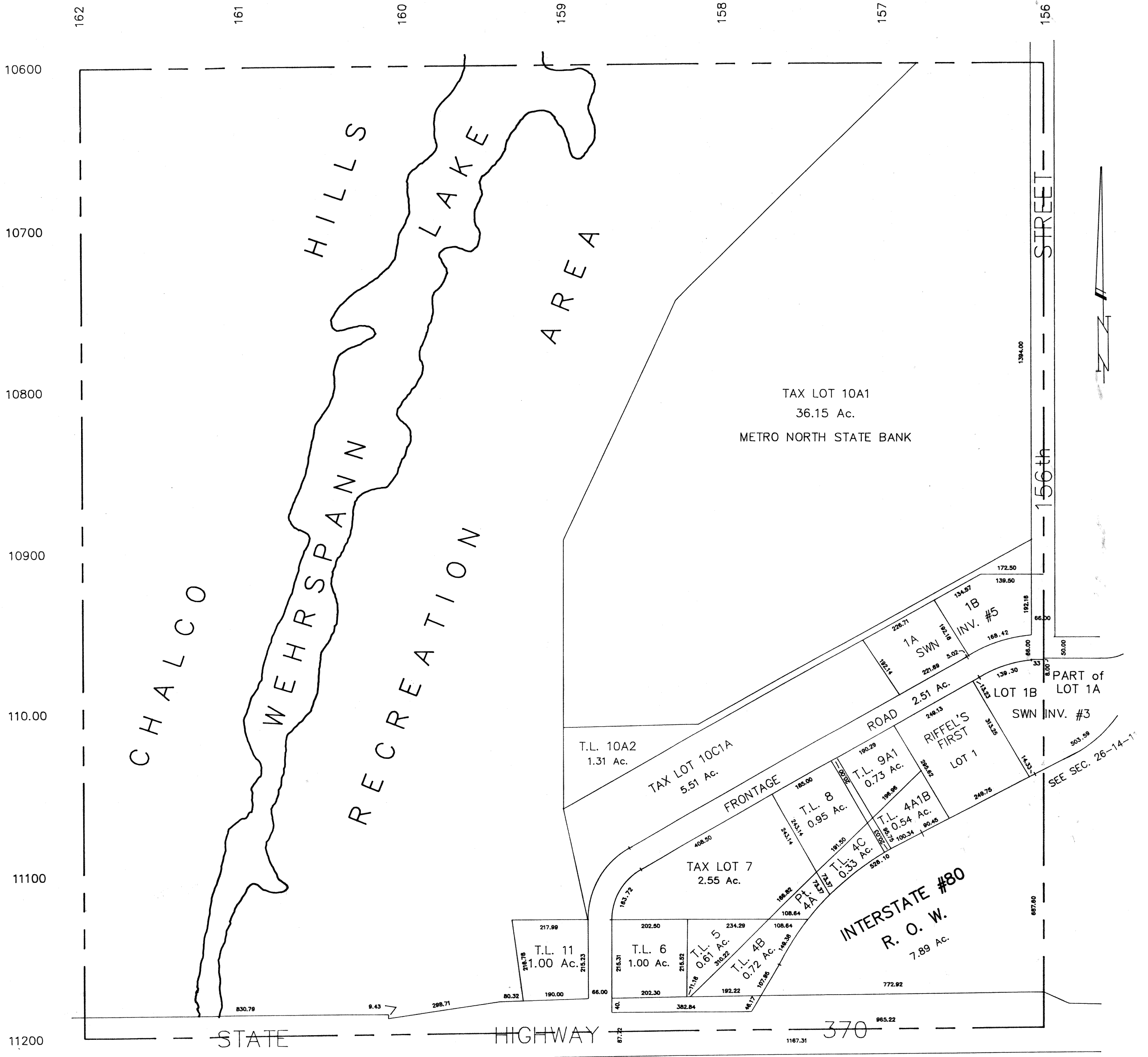


SE1/4 SEC. 27-T14N-R11E
SCALE 1" = 200'

RONALD A. RYSTROM
SARPY COUNTY SURVEYOR

859



SARPY COUNTY SURVEYOR
JUNE 1971

- REVISED
- 3-10-77
- 10-20-77
- 3-30-79
- 7-24-81
- 12-02-81
- 1-20-88