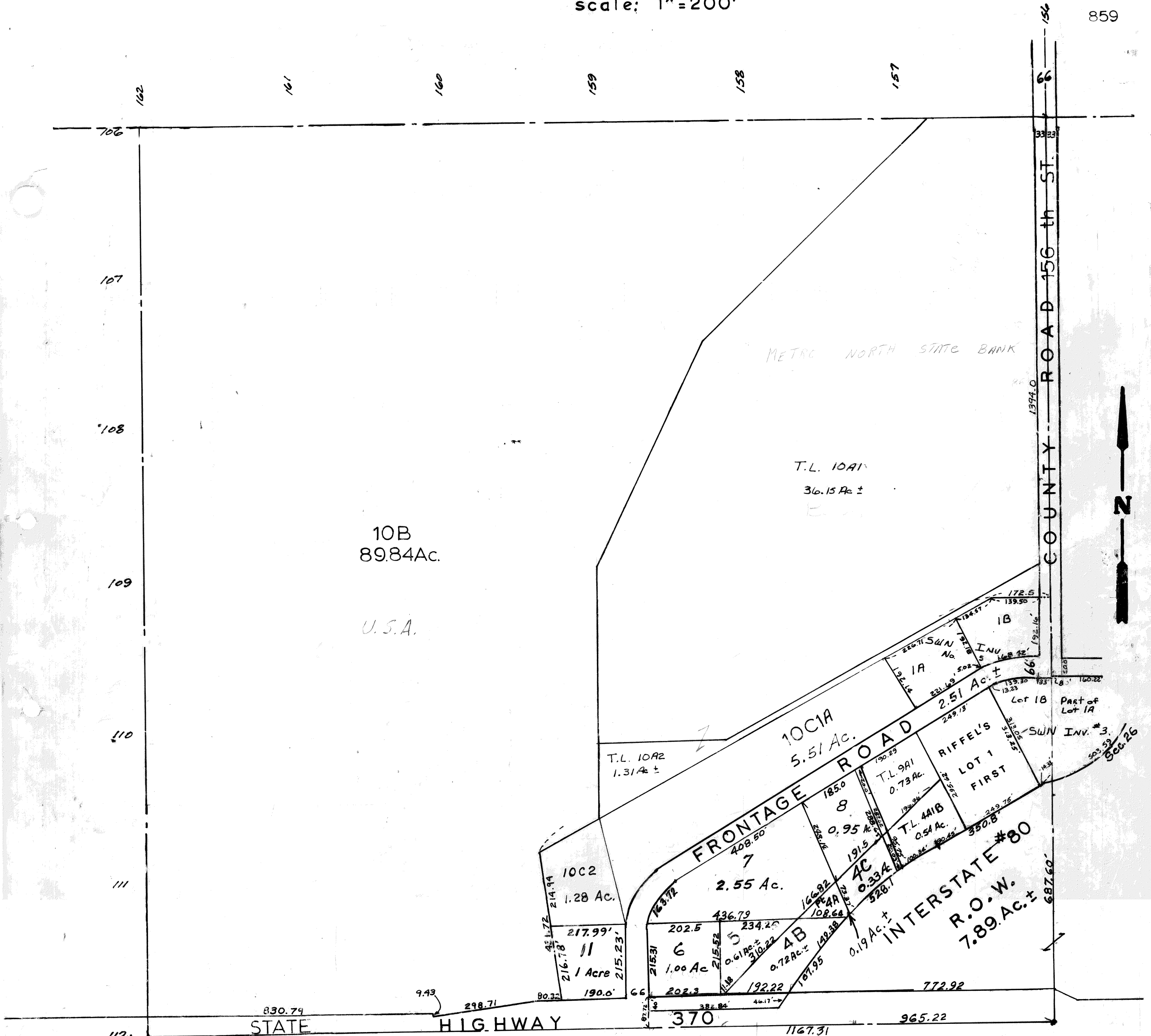


SE 1/4 - SEC. 27 - T14N - R11E.
scale: 1" = 200'

859



SARPY COUNTY SURVEYOR'S OFFICE
JUNE 1971

- REVISED
- 3-10-77
 - 10-20-77
 - 3-30-79
 - 7-24-81
 - 12-2-81
 - 1-20-83