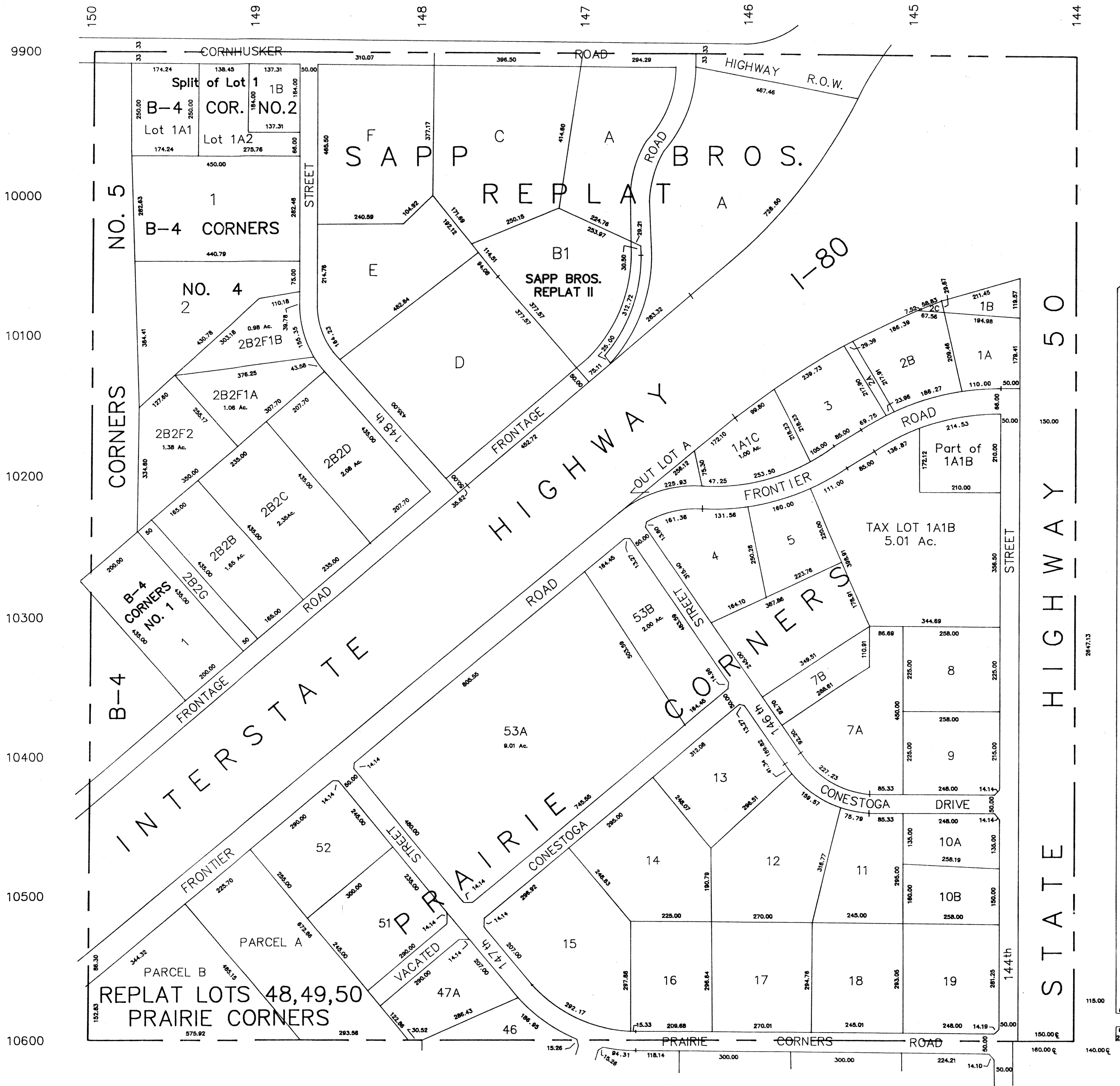


NE1/4 SEC. 26-T14N-R11E

SCALE 1" = 200'

RONALD A. RYSTROM  
SARPY COUNTY SURVEYOR

789



SARPY COUNTY SURVEYOR  
JULY 1974

REVISED

- 3-1978      9-1988
- 7-1978      12-1988
- 11-1978
- 6-1979
- 10-1979
- 1-1980
- 12-1981
- 11-1983
- 10-1985