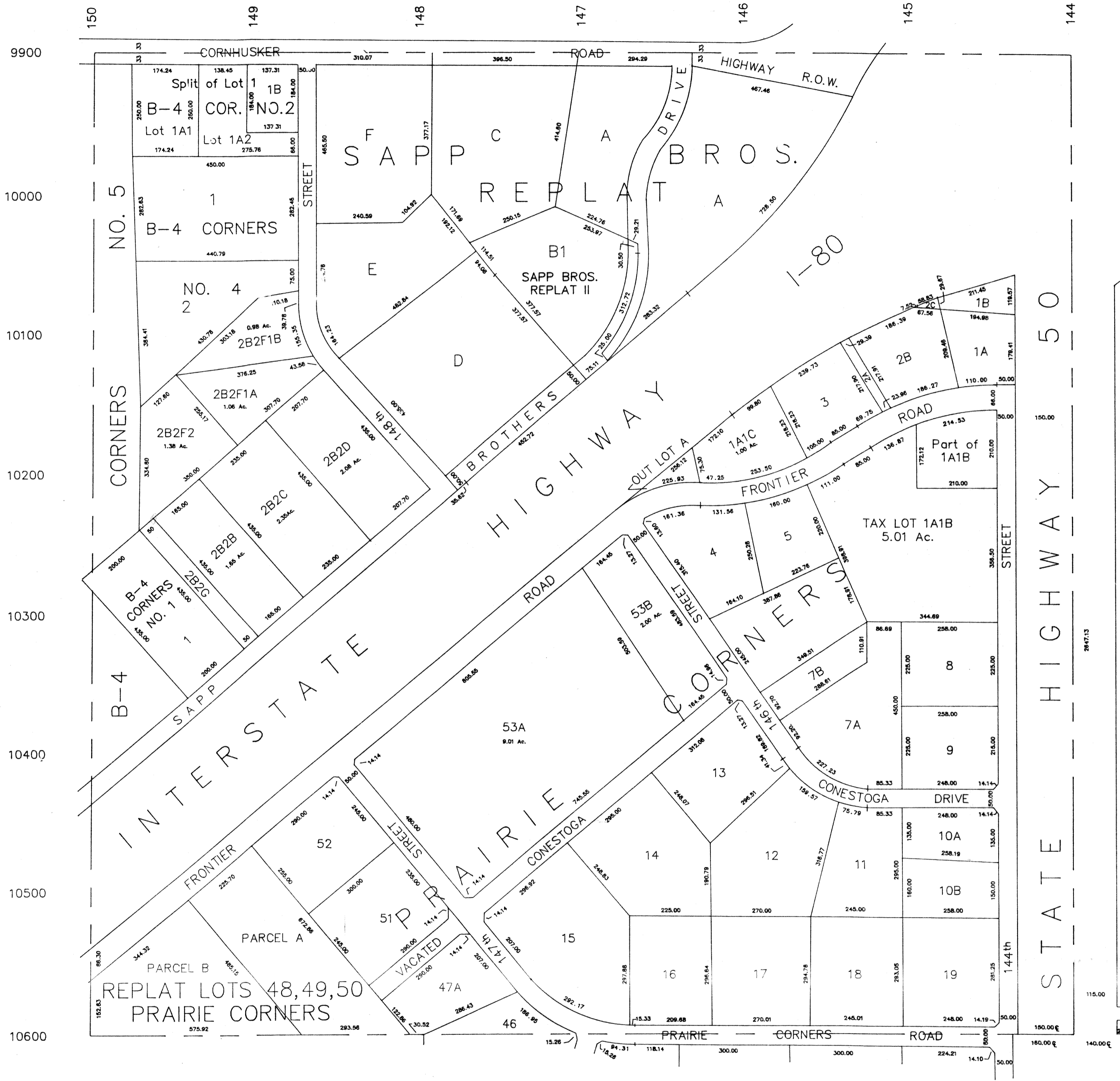


NE1/4 SEC. 26-T14N-R11E
SCALE 1" = 200'

789



SARPY COUNTY SURVEYOR
JULY 1974

- REVISED
- 3-1978
 - 7-1978
 - 11-1978
 - 6-1979
 - 10-1979
 - 1-1980
 - 12-1981
 - 11-1983
 - 10-1985
 - 9-1988
 - 12-1988
 - 7-12-91