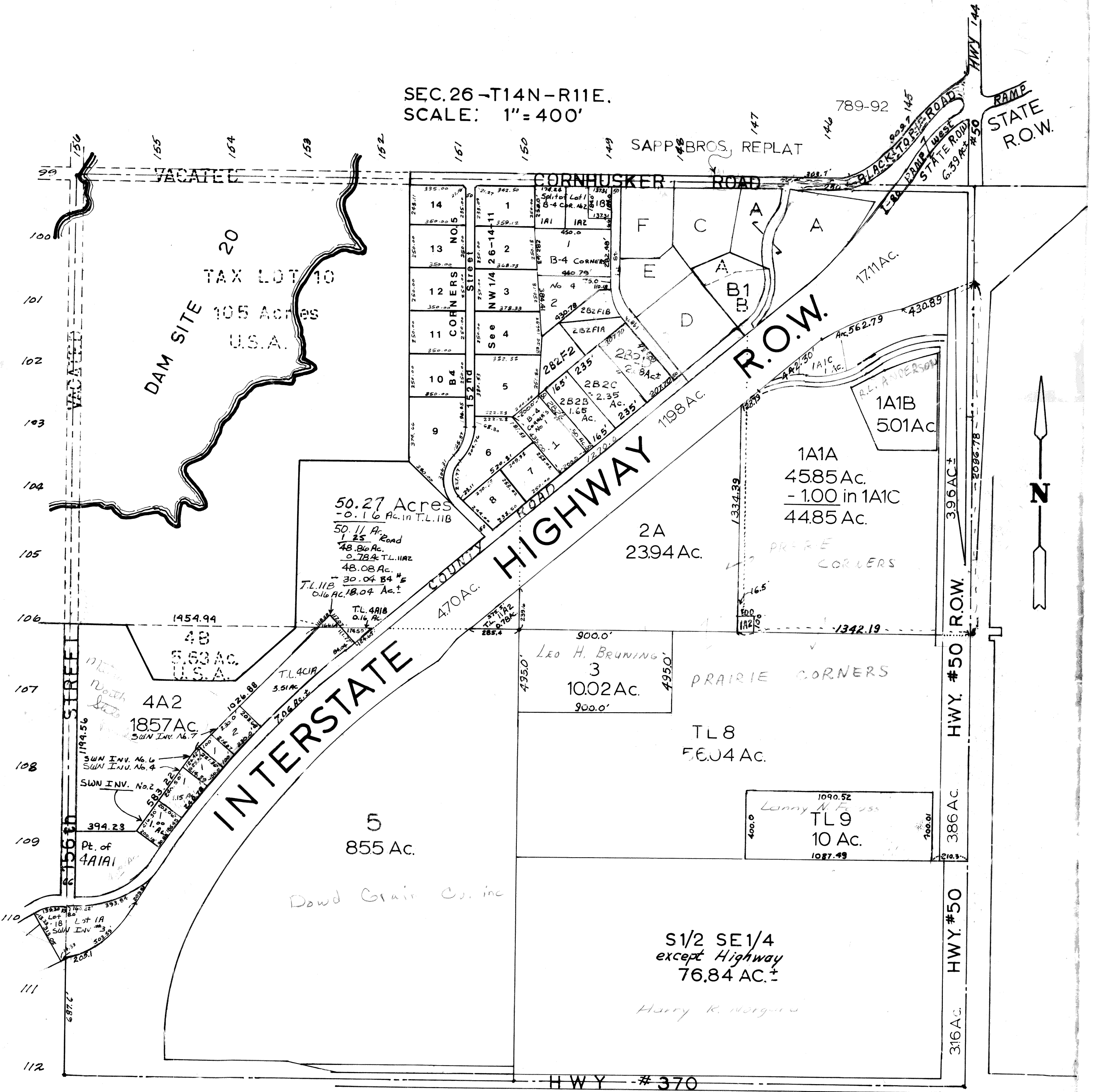


SEC. 26 - T14N - R11E.  
SCALE: 1" = 400'



SAPP BROS. REPLAT II  
B1 is Replat of B and Part of A

SARPY COUNTY SURVEYOR'S OFFICE  
DECEMBER 1958

REVISED - JANUARY, 1961.  
 3 - 5 - 71  
 3 - 10 - 77  
 7 - 26 - 77  
 11 - 20 - 78  
 2 - 21 - 79  
 6 - 4 - 79  
 1 - 10 - 80  
 7 - 28 - 81  
 11 - 13 - 81  
 12 - 02 - 81  
 5 - 30 - 85