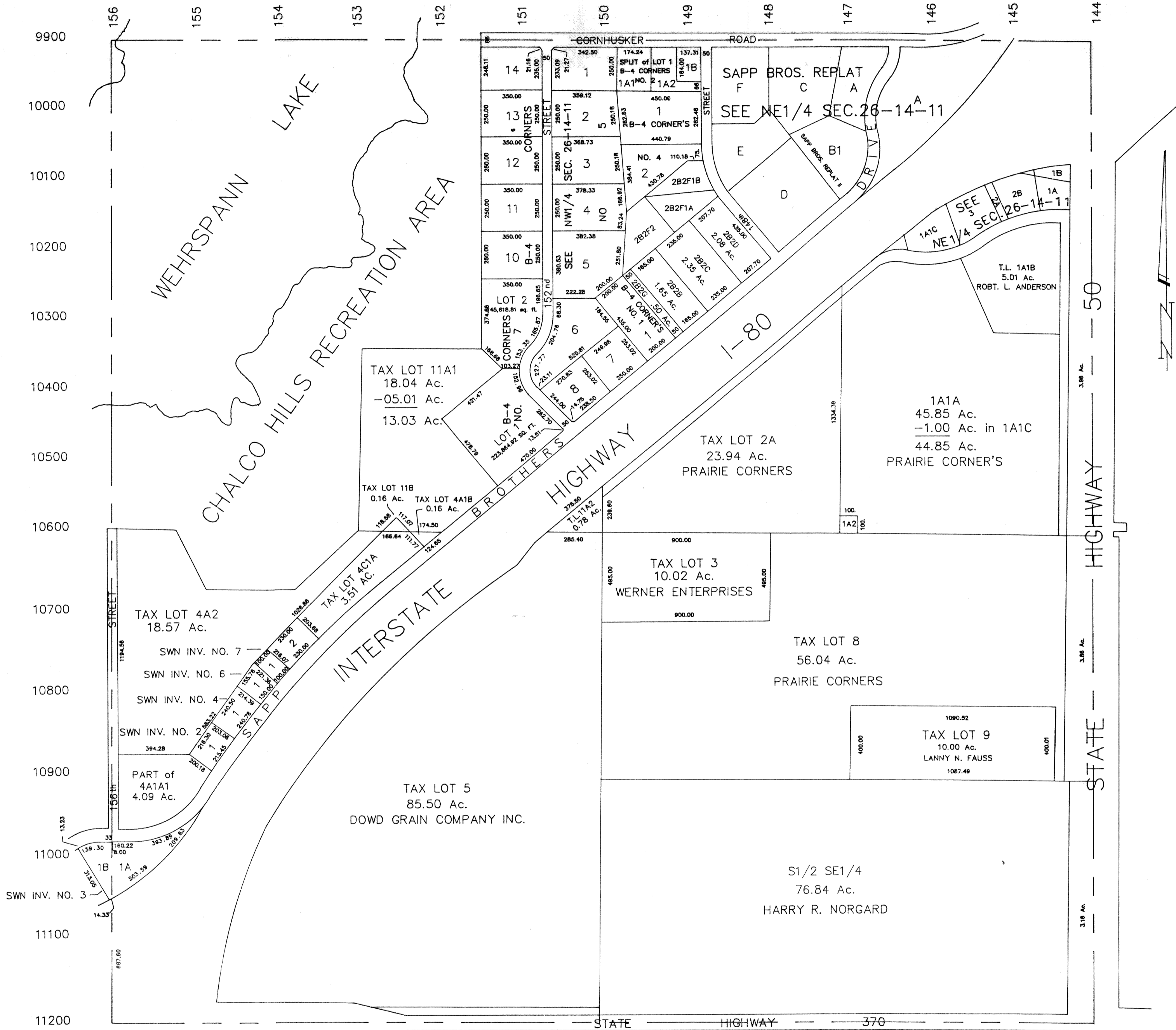


SEC. 26-T14N-R11E

SCALE 1" = 400'

789-92



SAPP BROS. REPLAT II
B1 is Replat of B and part of A

LOT 1 B-4 CORNERS NO. 6 IS NOW PART OF
B-4 CORNERS NO. 7

SARPY COUNTY SURVEYOR
DECEMBER 1958

REVISED

1- -61	1-10-80	8- 2-90
3- 5-71	7-28-81	7- 8-91
3-10-77	11-13-81	7-12-91
7-26-77	12-02-81	
11-20-78	5-30-85	
2-21-79	5- 6-88	
6- 4-79	12- 2-88	