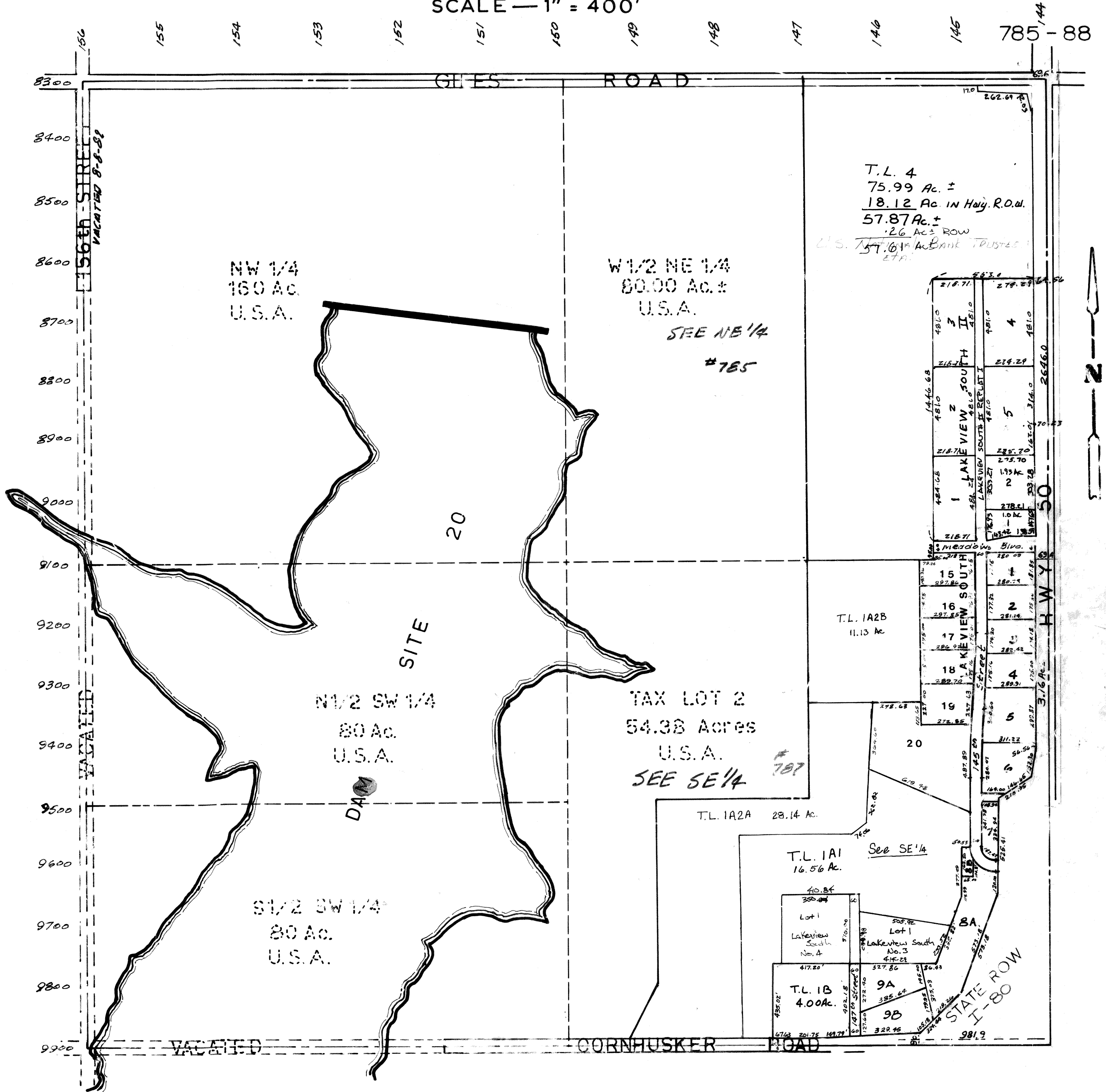


SEC. 23-T14N-R11E.
SCALE — 1" = 400'



SARPY COUNTY SURVEYOR'S OFFICE
MARCH, 1960

6-20-95-08635	REVISD
8-9-95-11534	2-17-64
10-21-96-PLAT	3-10-77
	7-26-77
	5-30-85
	3-13-87
	5-9-88
	9-29-88
	1-5-89
	6-5-89
	11-6-89
	11-18-92