

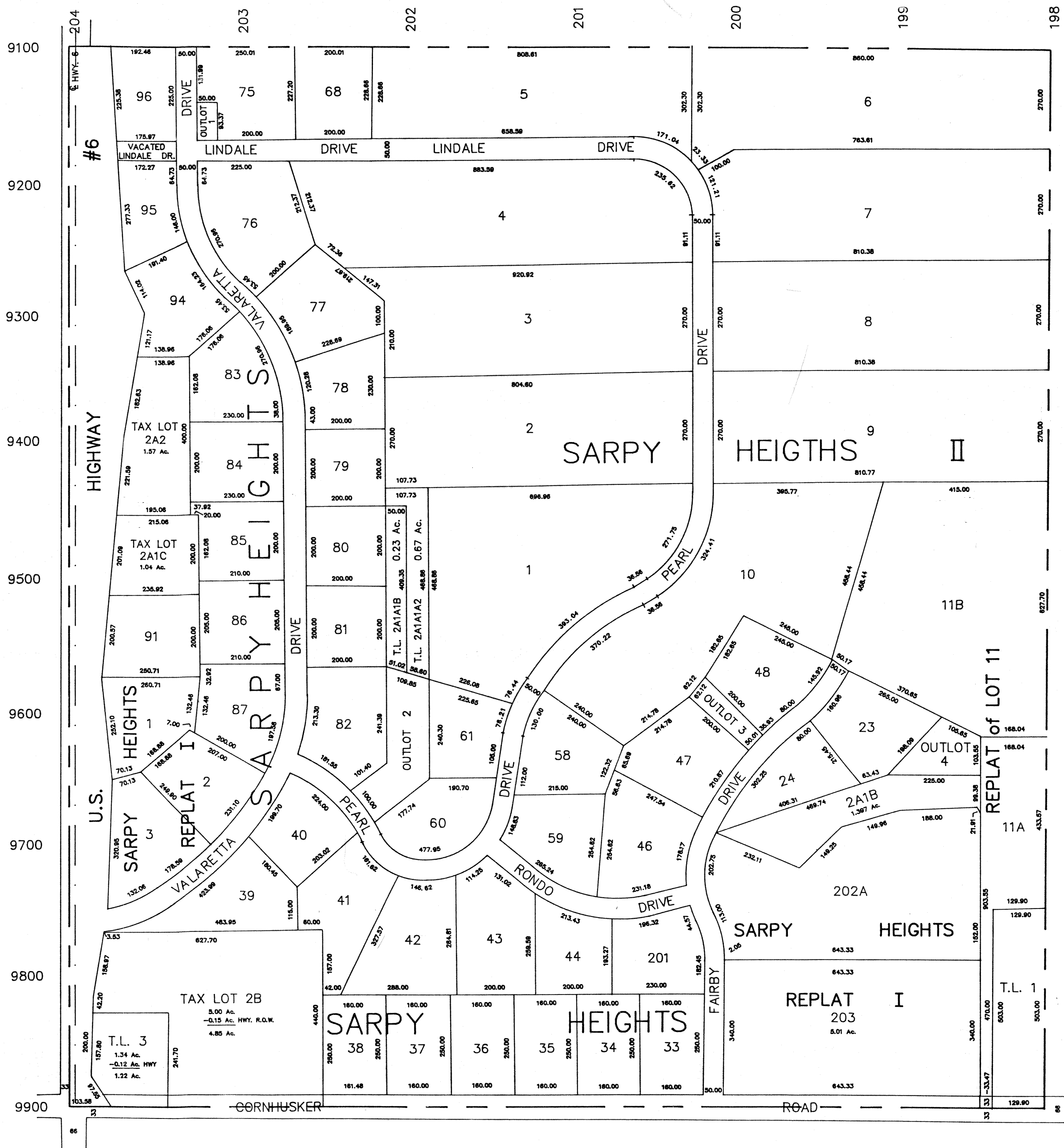
SW1/4 SEC. 19-T14N-R11E

SCALE 1" = 200'

RONALD A. RYSTROM

SARPY COUNTY SURVEYOR

1206



SARPY COUNTY SURVEYOR
FEBRUARY 1965

REVISED

- 9-24-73
- 11-21-78
- 12-26-78
- 9-3-86
- 7-22-88
- 9-11-89
- 12-8-89
- 8-3-90