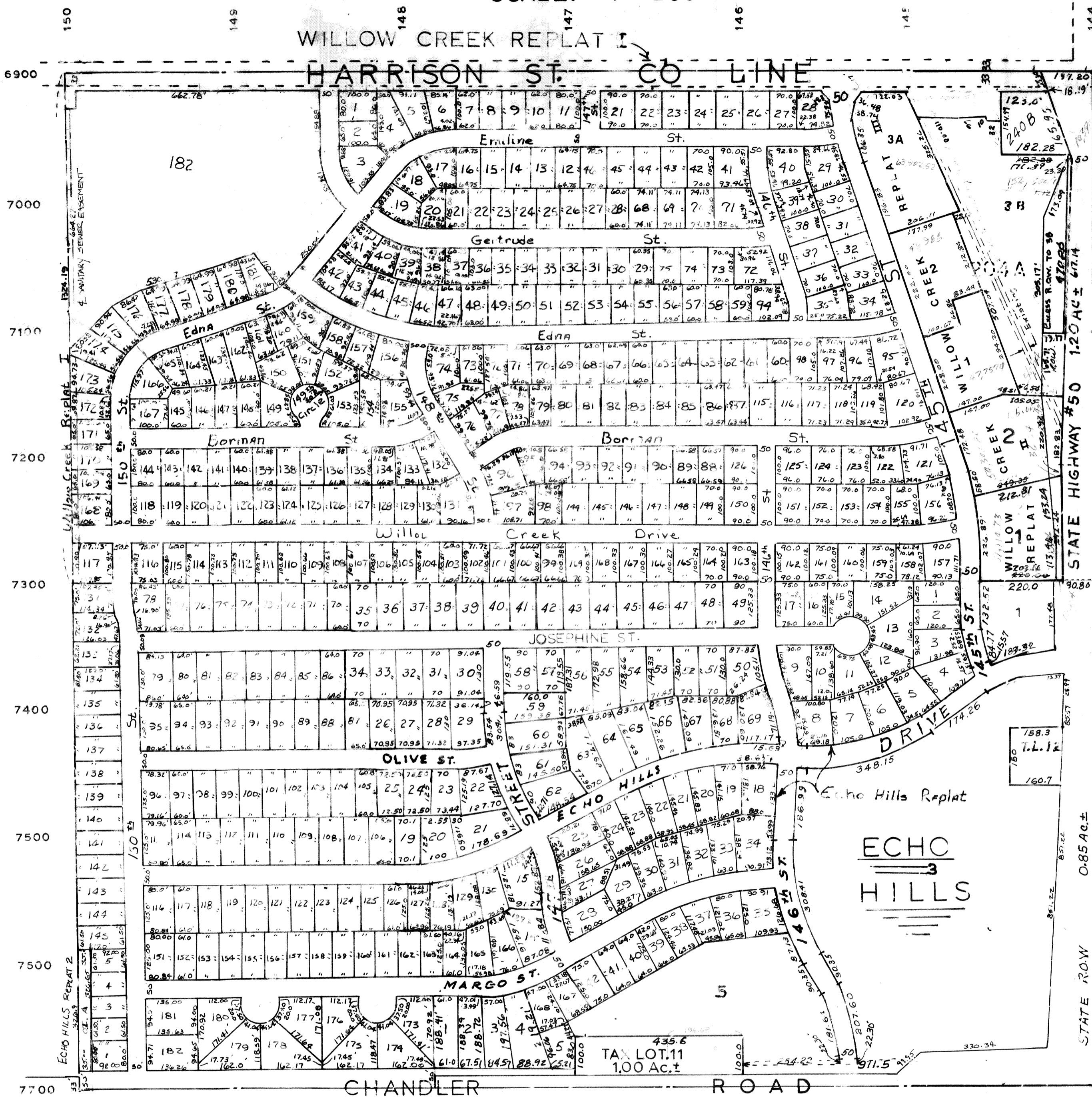


NE. 1/4-SEC. 14-T14N-R11E
SCALE: 1" = 200'



(ECHO HILLS REPLAT 3)

SARPY COUNTY SURVEYOR'S OFFICE
MARCH — 1958
Revised—NOVEMBER — 1963

- 4-13-94 5-23-90
- 12-3-77 3-29-89
- E.H.RE. 3 08-23-00 5-10-88
- 08-12-04 2-3-86
- 08-16-04-12-02 10-24-73
- 3-06-74
- 10-04-78
- 1-15-79
- 8-29-79