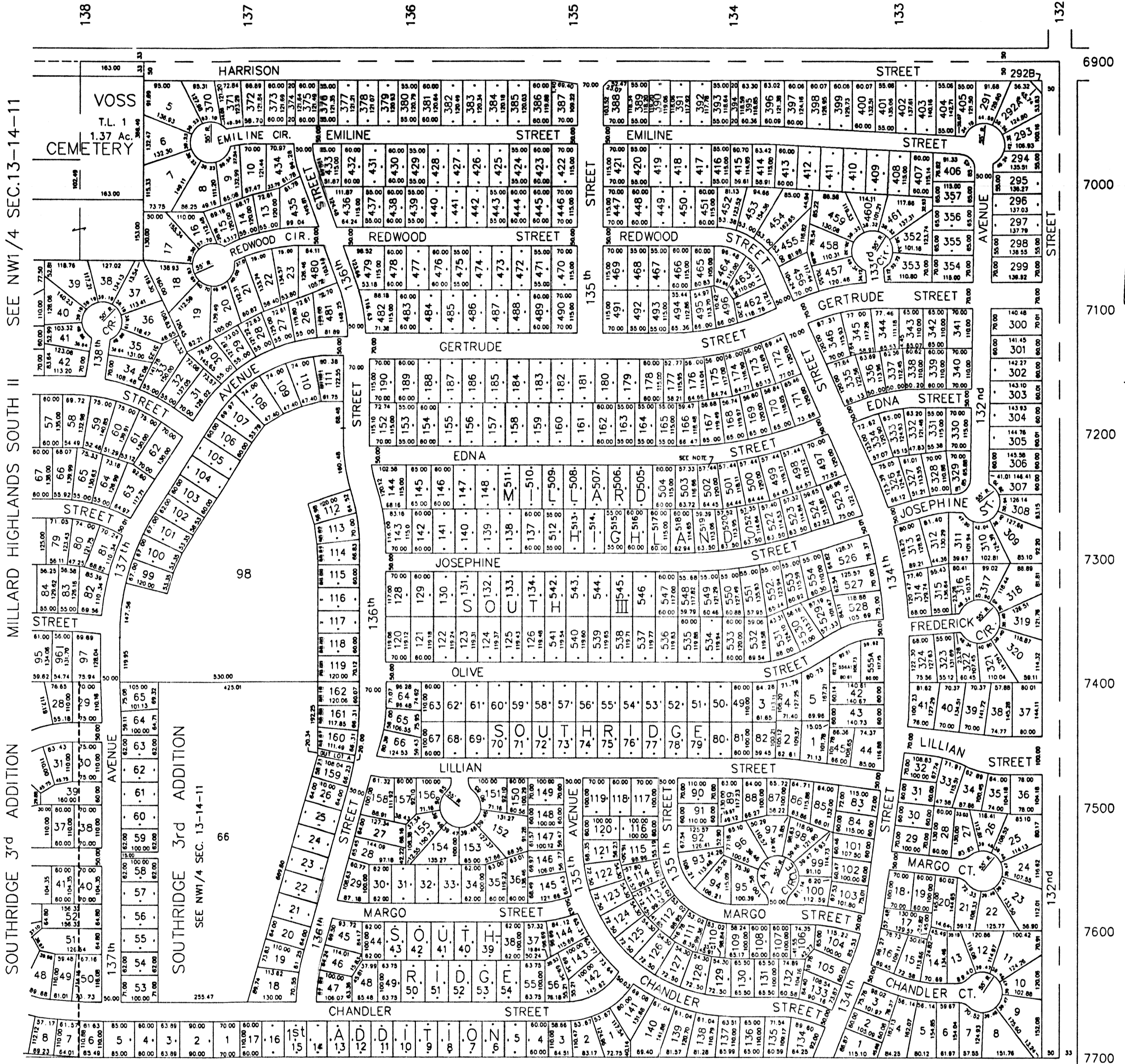
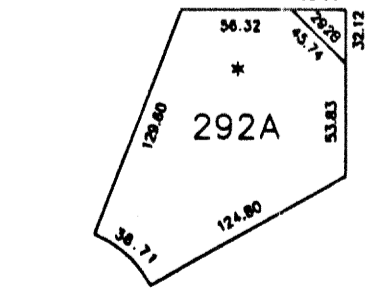


NE1/4 SEC. 13-T14N-R11E
SCALE 1" = 200'



MILLARD HIGHLANDS SOUTH II - LOTS 5 thru 10, 13 THRU 23,
26 thru 126, 128 thru 134, 137 thru 148
152 thru 190, 291 thru 346, 352 thru 357
MILLARD HIGHLANDS SOUTH II REPLAT - LOTS 370 thru 496 INCLUSIVE
MILLARD HIGHLANDS SOUTH III LOTS 497 THRU 556 INCLUSIVE
SOUTHRIDGE 2nd ADDITION
Lots 1 thru 5 inclusive, a Replat of Lots 46,47 and 48, SOUTHRIDGE,
and part of Lot 556A, MILLARD HIGHLANDS SOUTH III
NOTE:
Lot 502 has been split, see PLAN FILE
for SURVEYOR'S CERTIFICATE



LOT 292A and 292B
MILLARD HIGHLANDS SOUTH II

SARPY COUNTY SURVEYOR
FEBRUARY 1979

- REVISED
- 8-14-79 08-31-04-32648
 - 1-10-84 11-29-04-37939
 - 12- 6-84
 - 10-14-88
 - 9-11-89
 - 3-15-90
 - 11- 1-90
 - 8-22-91
 - 8-27-91
 - 1-29-92