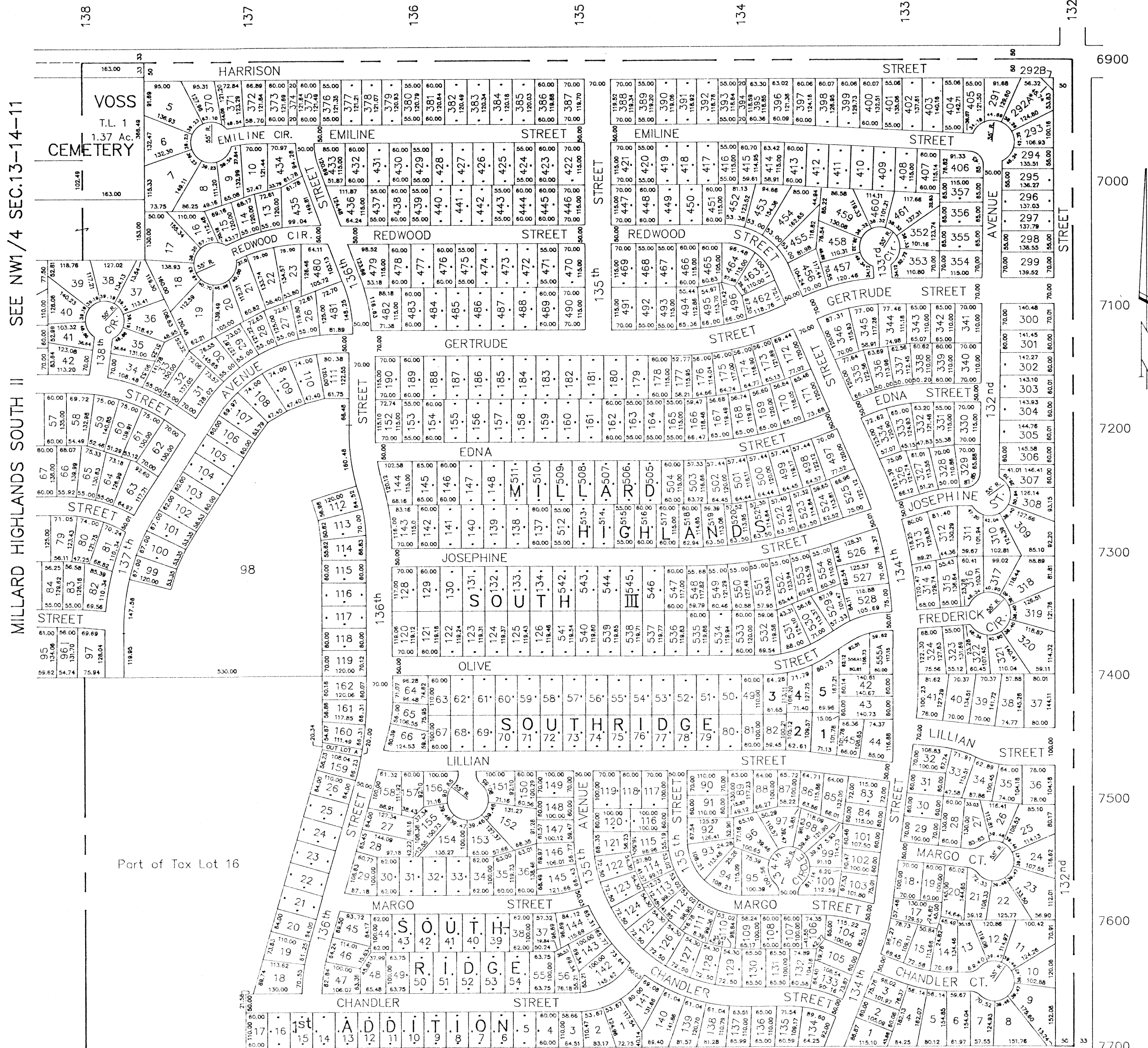


NE1/4 SEC. 13-T14N-R11E

SCALE 1" = 200'

931



MILLARD HIGHLANDS SOUTH II SEE NW1/4 SEC.13-14-11

MILLARD HIGHLANDS SOUTH II - LOTS 5 thru 10, 13 THRU 23,  
26 thru 126, 128 thru 134, 137 thru 148  
152 thru 190, 291 thru 346, 352 thru 357

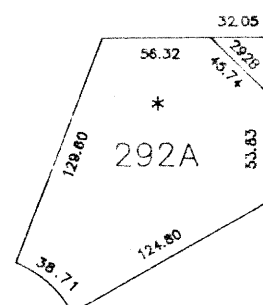
MILLARD HIGHLANDS SOUTH II REPLAT - LOTS 370 thru 496 INCLUSIVE

MILLARD HIGHLANDS SOUTH III LOTS 497 THRU 556 INCLUSIVE

SOUTHRIDGE 2nd ADDITION

Lots 1 thru 5 inclusive, a Replat of Lots 46,47 and 48, SOUTHRIDGE,  
and part of Lot 556A, MILLARD HIGHLANDS SOUTH III

LOT 292A and 292B  
MILLARD HIGHLANDS SOUTH II



SARPY COUNTY SURVEYOR  
FEBRUARY 1979

REVISED

8-14-79

1-10-84

12-6-84

10-14-88

9-11-89

3-15-90

11-1-90

6900  
7000  
7100  
7200  
7300  
7400  
7500  
7600  
7700