

NE1/4 SEC. 13-T14N-R11E
SCALE 1" = 200'

931



MILLARD HIGHLANDS SOUTH II - LOTS 5 thru 10, 13 THRU 23,
26 thru 126, 128 thru 134, 137 thru 148
152 thru 190, 291 thru 346, 352 thru 357

MILLARD HIGHLANDS SOUTH II REPLAT - LOTS 370 thru 496 INCLUSIVE

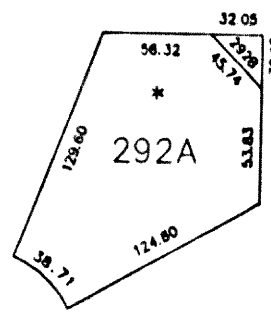
MILLARD HIGHLANDS SOUTH III LOTS 497 THRU 556 INCLUSIVE

SOUTHRIDGE 2nd ADDITION

Lots 1 thru 5 inclusive, a Replat of Lots 46,47 and 48, SOUTHRIDGE,
and part of Lot 556A, MILLARD HIGHLANDS SOUTH III

NOTE:

Lot 502 has been split, see PLAN FILE
for SURVEYOR'S CERTIFICATE



LOT 292A and 292B
MILLARD HIGHLANDS SOUTH II

SARPY COUNTY SURVEYOR
FEBRUARY 1979

REVISED

- 8-14-79 08-31-04-32648
- 1-10-84
- 12- 6-84
- 10-14-88
- 9-11-89
- 3-15-90
- 11- 1-90
- 8-22-91
- 8-27-91
- 1-29-92