

NE1/4 SEC. 13-T14N-R11E

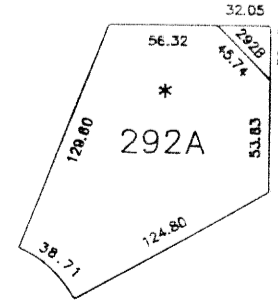
SCALE 1" = 200'



SOUTH RIDGE 3rd ADDITION
 MILLARD HIGHLANDS SOUTH II
 SEE NW1/4 SEC. 13-14-11

MILLARD HIGHLANDS SOUTH II - LOTS 5 thru 10, 13 THRU 23,
 26 thru 126, 128 thru 134, 137 thru 148
 152 thru 190, 291 thru 346, 352 thru 357

MILLARD HIGHLANDS SOUTH II REPLAT - LOTS 370 thru 496 INCLUSIVE
 MILLARD HIGHLANDS SOUTH III LOTS 497 THRU 556 INCLUSIVE
 SOUTH RIDGE 2nd ADDITION
 Lots 1 thru 5 inclusive, a Replat of Lots 46,47 and 48, SOUTH RIDGE,
 and part of Lot 556A, MILLARD HIGHLANDS SOUTH III



LOT 292A and 292B
 MILLARD HIGHLANDS SOUTH II

SАРY COUNTY SURVEYOR
 FEBRUARY 1979

REVISED

- 8-14-79
- 1-10-84
- 12-6-84
- 10-14-88
- 9-11-89
- 3-15-90
- 11-1-90
- 8-22-91
- 8-27-91