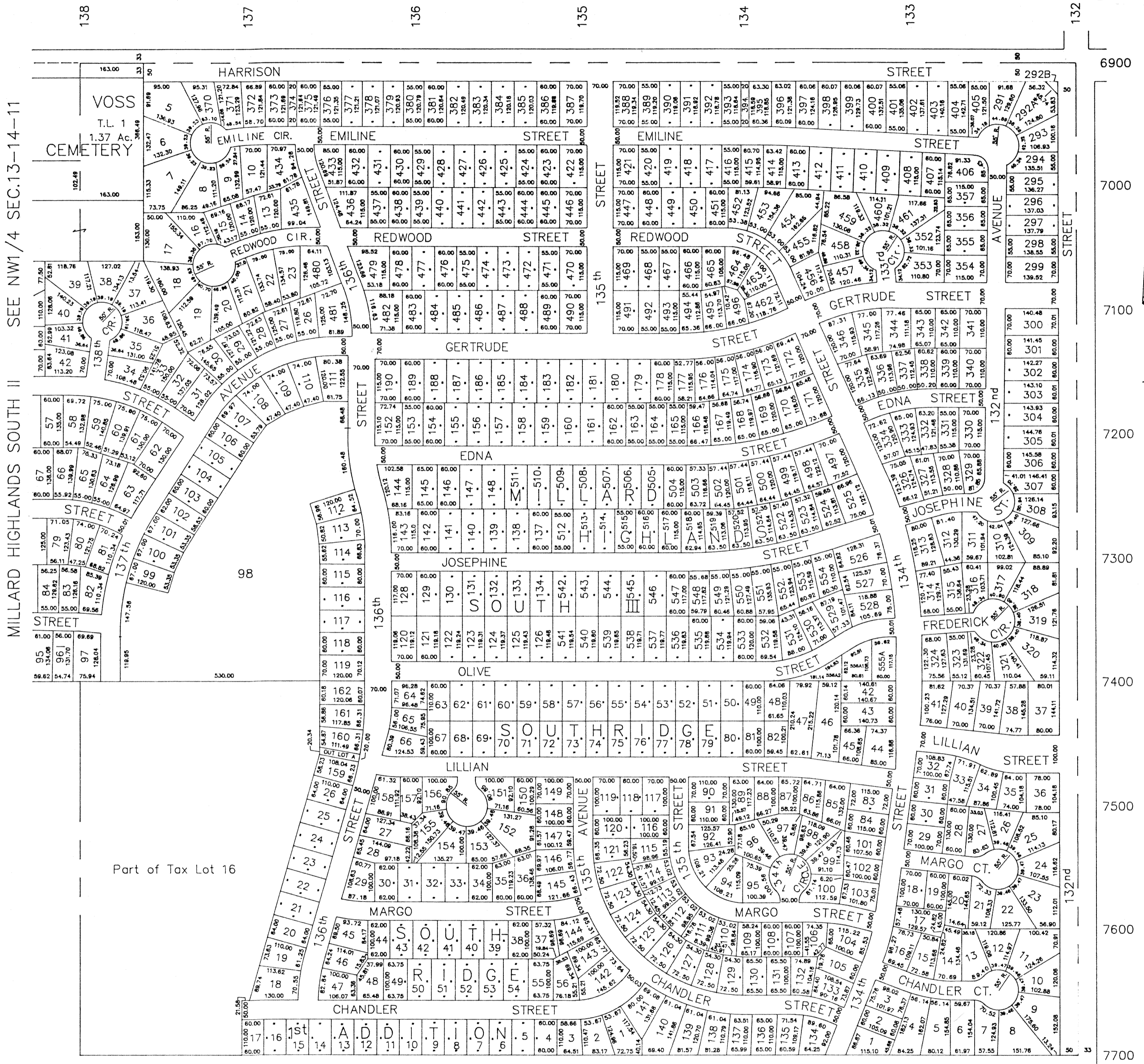


NE1/4 SEC. 13-T14N-R11E  
SCALE 1" = 200'

RONALD A. RYSTROM  
SARPY COUNTY SURVEYOR

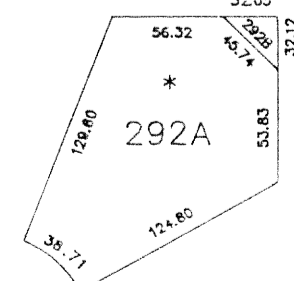
931



MILLARD HIGHLANDS SOUTH II - LOTS 5 thru 10, 13 THRU 23,  
26 thru 126, 128 thru 134, 137 thru 148  
152 thru 190, 291 thru 346, 352 thru 357

MILLARD HIGHLANDS SOUTH II REPLAT - LOTS 370 thru 496 INCLUSIVE

MILLARD HIGHLANDS SOUTH III LOTS 497 THRU 556 INCLUSIVE



LOT 292A and 292B  
MILLARD HIGHLANDS SOUTH II

SARPY COUNTY SURVEYOR  
FEBRUARY 1979

REVISED

- 8-14-79
- 1-10-84
- 12-6-84
- 10-14-88
- 9-11-89
- 3-15-90