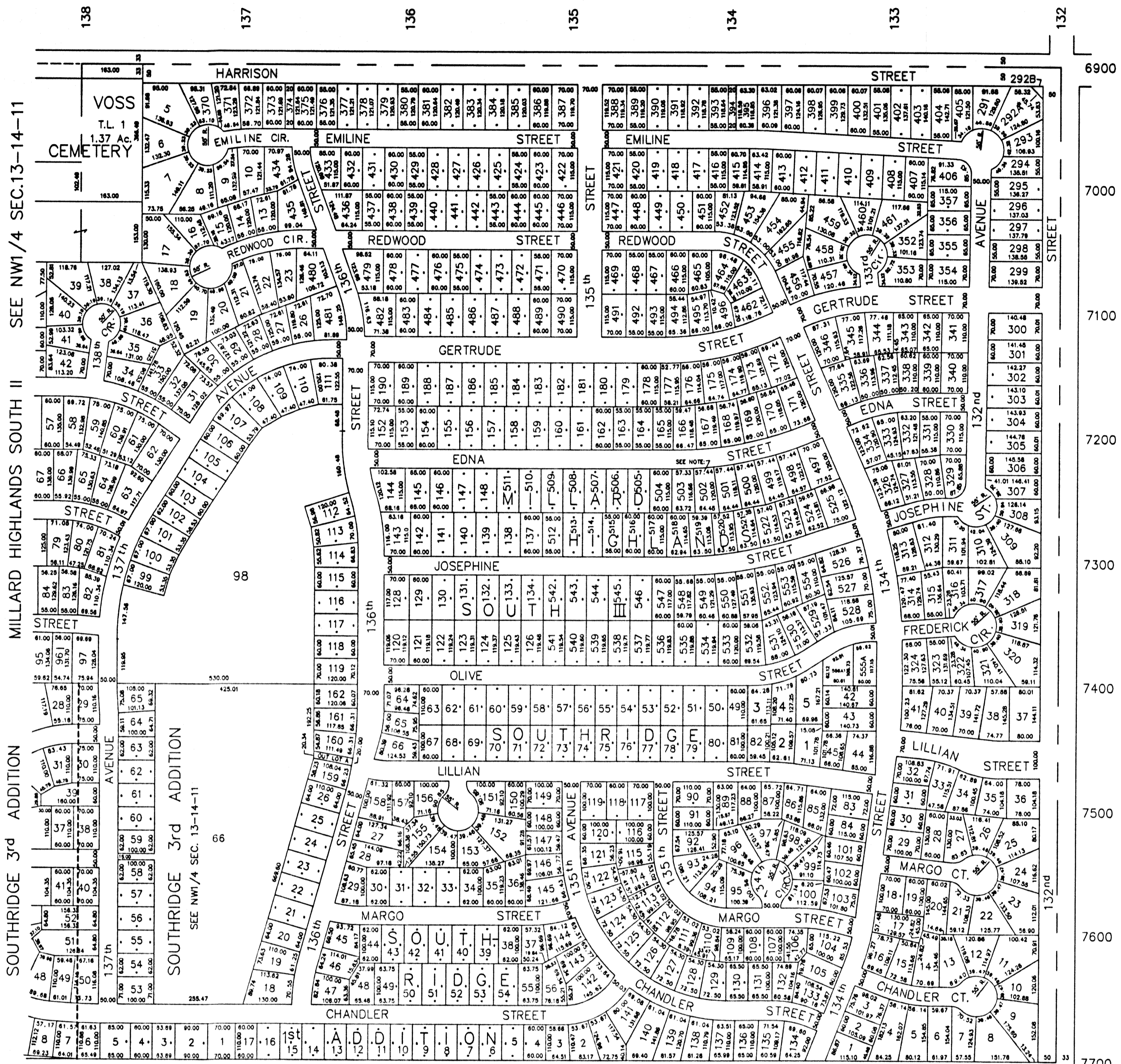


NE1/4 SEC. 13-T14N-R11E  
SCALE 1" = 200'



MILLARD HIGHLANDS SOUTH II - LOTS 5 thru 10, 13 THRU 23,  
26 thru 126, 128 thru 134, 137 thru 148  
152 thru 190, 291 thru 346, 352 thru 357

MILLARD HIGHLANDS SOUTH II REPLAT - LOTS 370 thru 496 INCLUSIVE

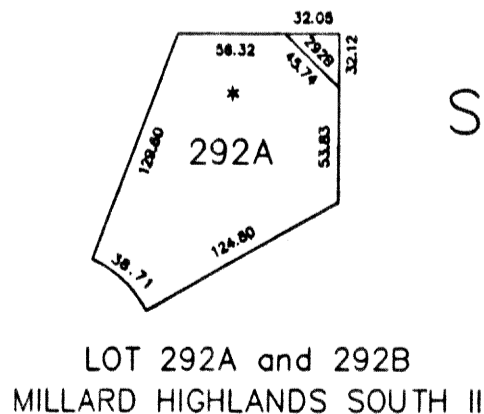
MILLARD HIGHLANDS SOUTH III LOTS 497 THRU 556 INCLUSIVE

SOUTH RIDGE 2nd ADDITION

Lots 1 thru 5 inclusive, a Replat of Lots 46,47 and 48, SOUTH RIDGE,  
and part of Lot 556A, MILLARD HIGHLANDS SOUTH III

NOTE:

Lot 502 has been split, see PLAN FILE  
for SURVEYOR'S CERTIFICATE



SARPY COUNTY SURVEYOR  
FEBRUARY 1979

REVISED

- 8-14-79
- 1-10-84
- 12-6-84
- 10-14-88
- 9-11-89
- 3-15-90
- 11-1-90
- 8-22-91
- 8-27-91
- 1-29-92