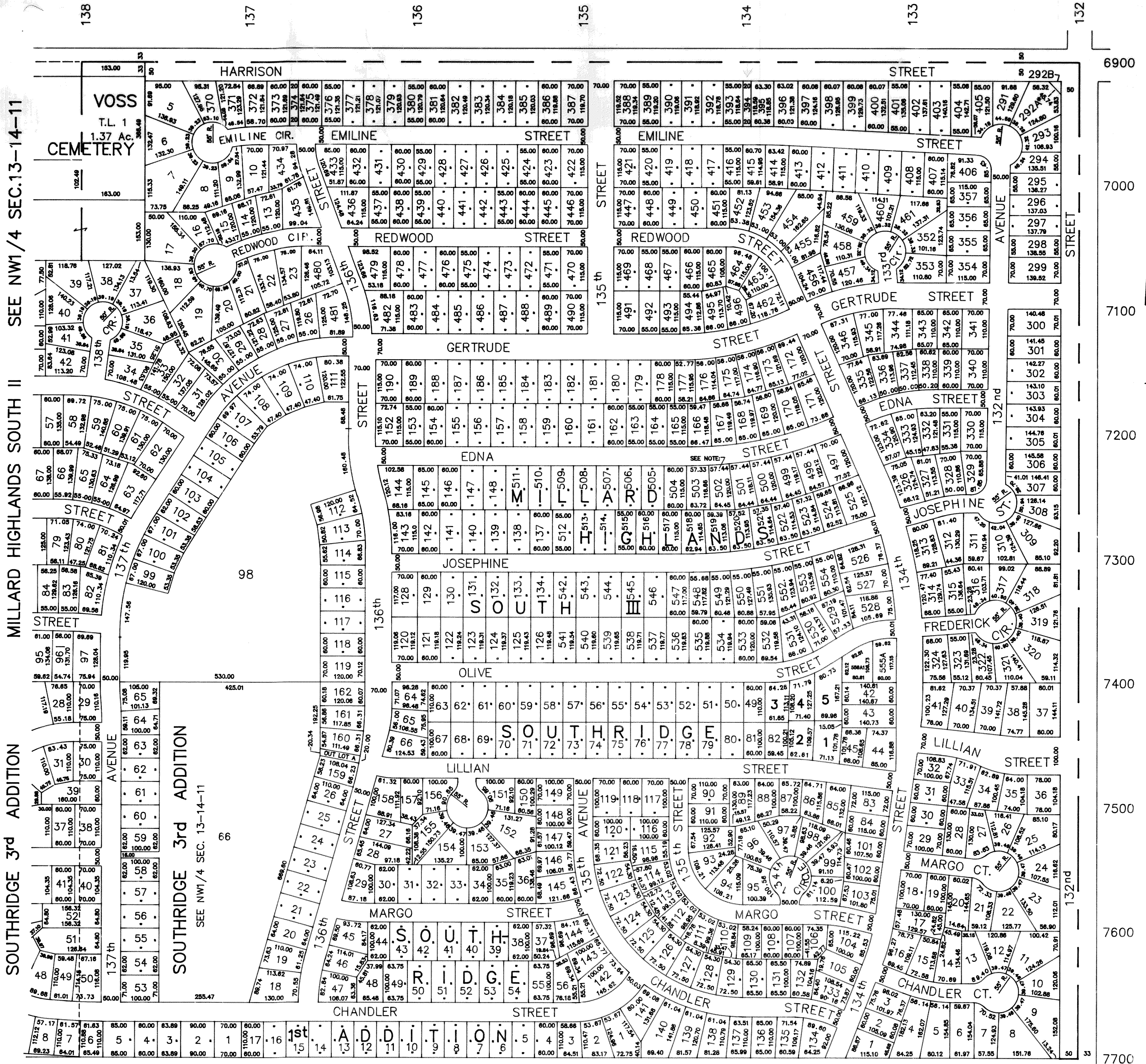


NE1/4 SEC. 13-T14N-R11E
SCALE 1" = 200'



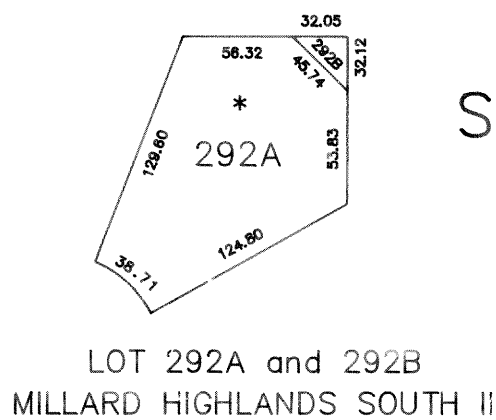
SOUTHRIDGE 3rd ADDITION SEE NW1/4 SEC. 13-14-11
MILLARD HIGHLANDS SOUTH II
SOUTHRIDGE 3rd ADDITION SEE NW1/4 SEC. 13-14-11

MILLARD HIGHLANDS SOUTH II - LOTS 5 thru 10, 13 THRU 23,
26 thru 126, 128 thru 134, 137 thru 148
152 thru 190, 291 thru 346, 352 thru 357

MILLARD HIGHLANDS SOUTH II REPLAT - LOTS 370 thru 496 INCLUSIVE
MILLARD HIGHLANDS SOUTH III LOTS 497 THRU 556 INCLUSIVE

SOUTHRIDGE 2nd ADDITION
Lots 1 thru 5 inclusive, a Replat of Lots 46,47 and 48, SOUTHRIDGE,
and part of Lot 556A, MILLARD HIGHLANDS SOUTH III

NOTE:
Lot 502 has been split, see PLAN FILE
for SURVEYOR'S CERTIFICATE



SARPY COUNTY SURVEYOR
FEBRUARY 1979

REVISED

- 8-14-79
- 1-10-84
- 12- 6-84
- 10-14-88
- 9-11-89
- 3-15-90
- 11- 1-90
- 8-22-91
- 8-27-91
- 1-29-92