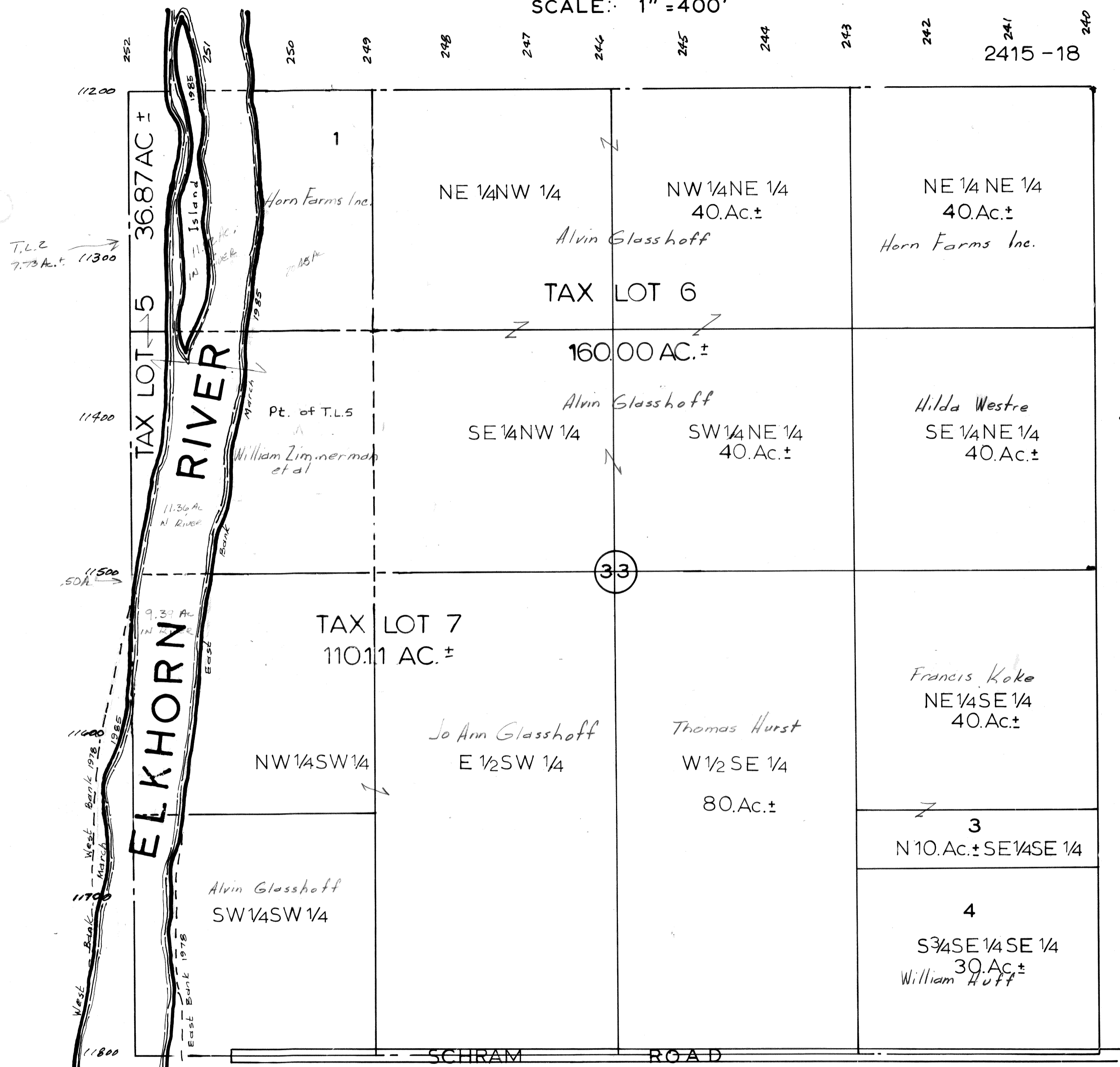


SEC.33·T14N·R10E

SCALE: 1" = 400'

241 242 243 244 245 246 247 248 249 250 251 252  
2415 - 18



TAX LOT 5: IS T.L.2, SW 1/4 NW 1/4, & NW 1/4 SW 1/4 W. OF RIVER  
 TAX LOT 6: IS NE 1/4 NW 1/4, NW 1/4 NE 1/4, SW 1/4 NE 1/4, SE 1/4 NW 1/4.  
 TAX LOT 7: IS E 1/2 SW 1/4 & NW 1/4 SW 1/4 E OF RIVER

SARPY COUNTY SURVEYOR'S OFFICE  
 FEBRUARY 1958

REVISED  
 3 - 14 - 77  
 8 - 4 - 78  
 2 - 28 - 86