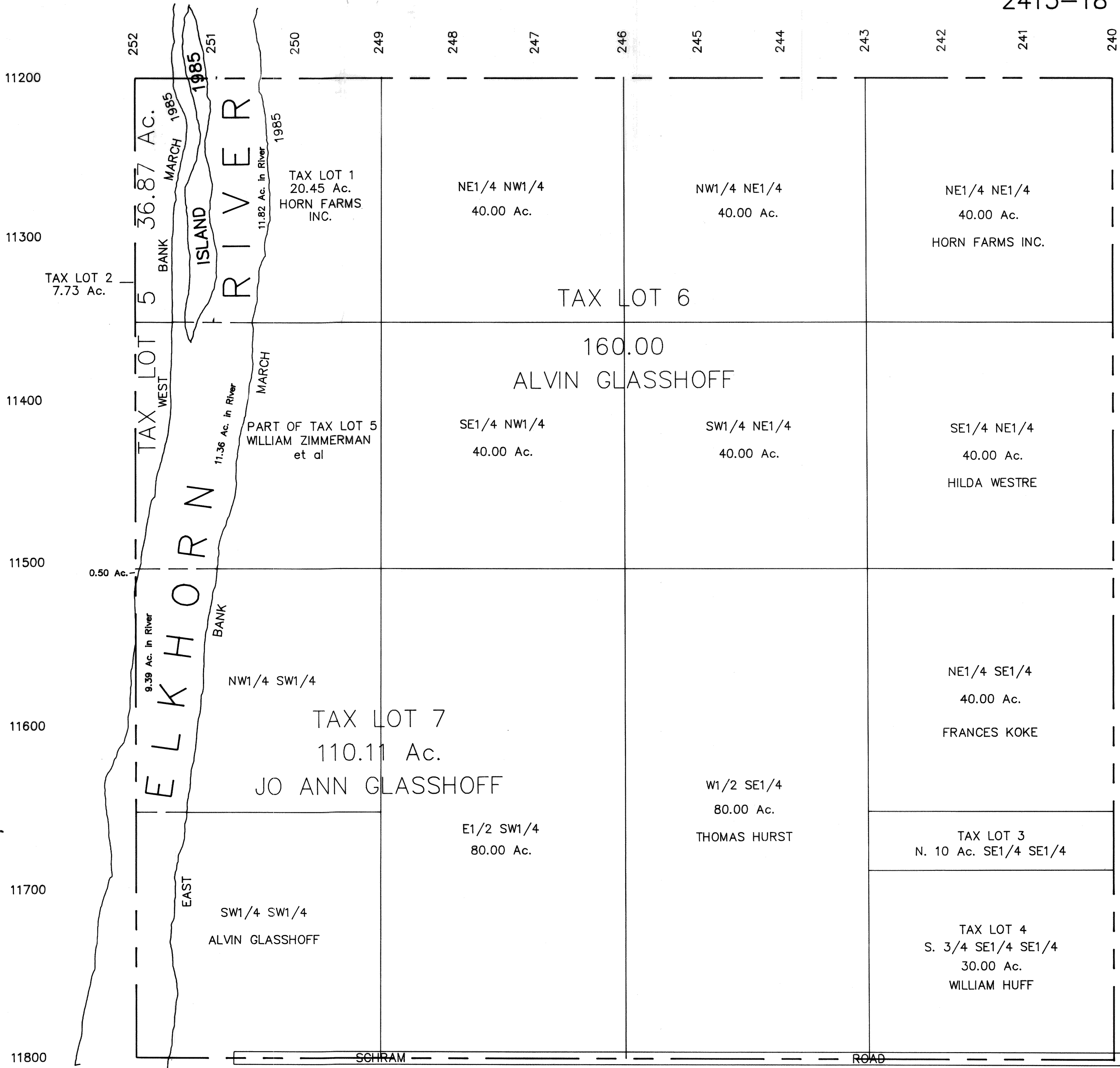


SEC. 33 T14N R10E
SCALE 1" = 400'

SARPY COUNTY SURVEYOR

2415-18



TAX LOT 5 IS T.L.2, SW1/4 NW1/4, AND
NW1/4 SW1/4 WEST OF THE RIVER
TAX LOT 6 IS NE1/4 NW1/4, NW1/4 NE1/4,
SW1/4 NE1/4, SE1/4 NW1/4.
TAX LOT 7 IS E1/2 SW1/4 AND NW1/4 SW1/4,
EAST OF THE RIVER

SARPY COUNTY SURVEYOR
FEBRUARY 1958

REVISED
3-14-77
8- 4-78
2-28-86