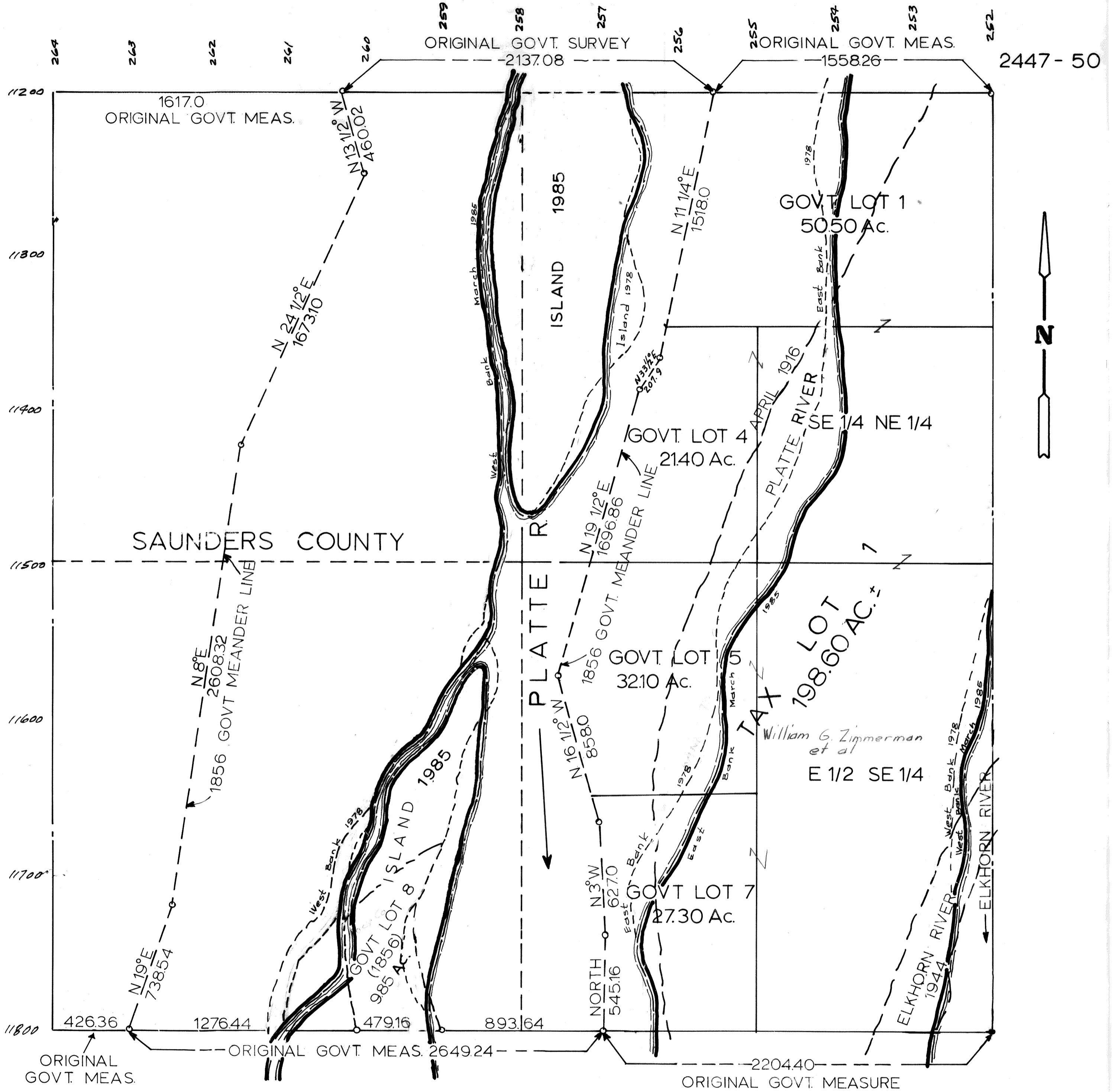


SEC. 32 T14N R10E  
SCALE: 1" = 400'



TAX LOT 1: IS GOVT. LOT 1, 4, 5, 7, & SE 1/4 NE 1/4, E 1/2 SE 1/4 198.60 AC. ±

SARPY COUNTY SURVEYOR'S OFFICE  
FEBRUARY... 1958

REVISED-NOVEMBER, 1961.

REVISED
3 - 14 - 77
8 - 4 - 78
3 - 7 - 85