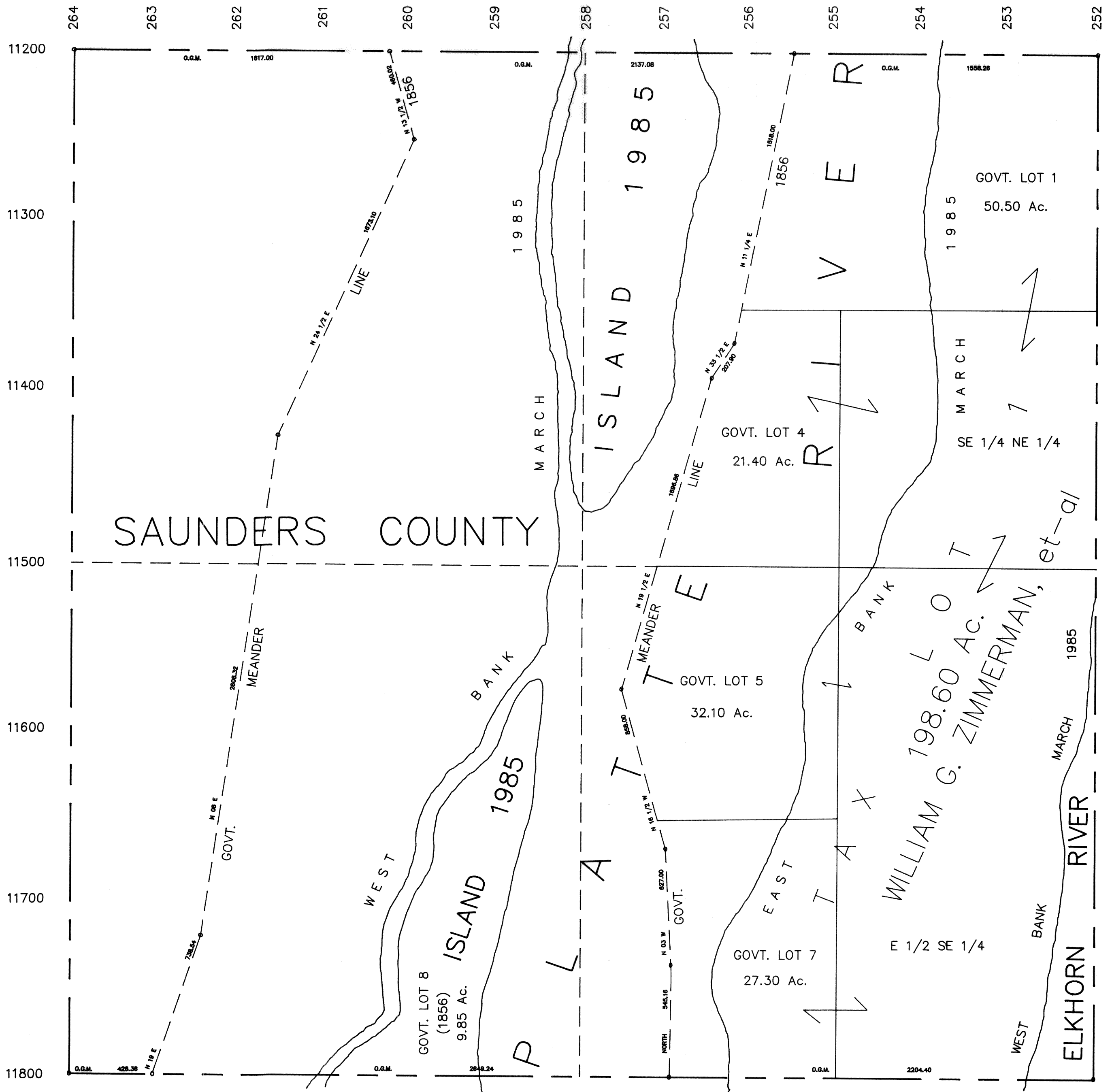


SEC. 32 T14N R10E
SCALE 1" = 400'

SARPY COUNTY SURVEYOR

2447-50



O.G.M. = ORIGINAL GOVERNMENT MEASURE

TAX LOT 1 : IS GOVERNMENT LOTS 1, 4, 5, 7,
AND SE1/4 NE1/4, E1/2 SE1/4 COMBINED

SARPY COUNTY SURVEYOR
FEBRUARY 1958

REVISED

- 11-18-61
- 3-14-77
- 8- 4-78
- 3- 7-85