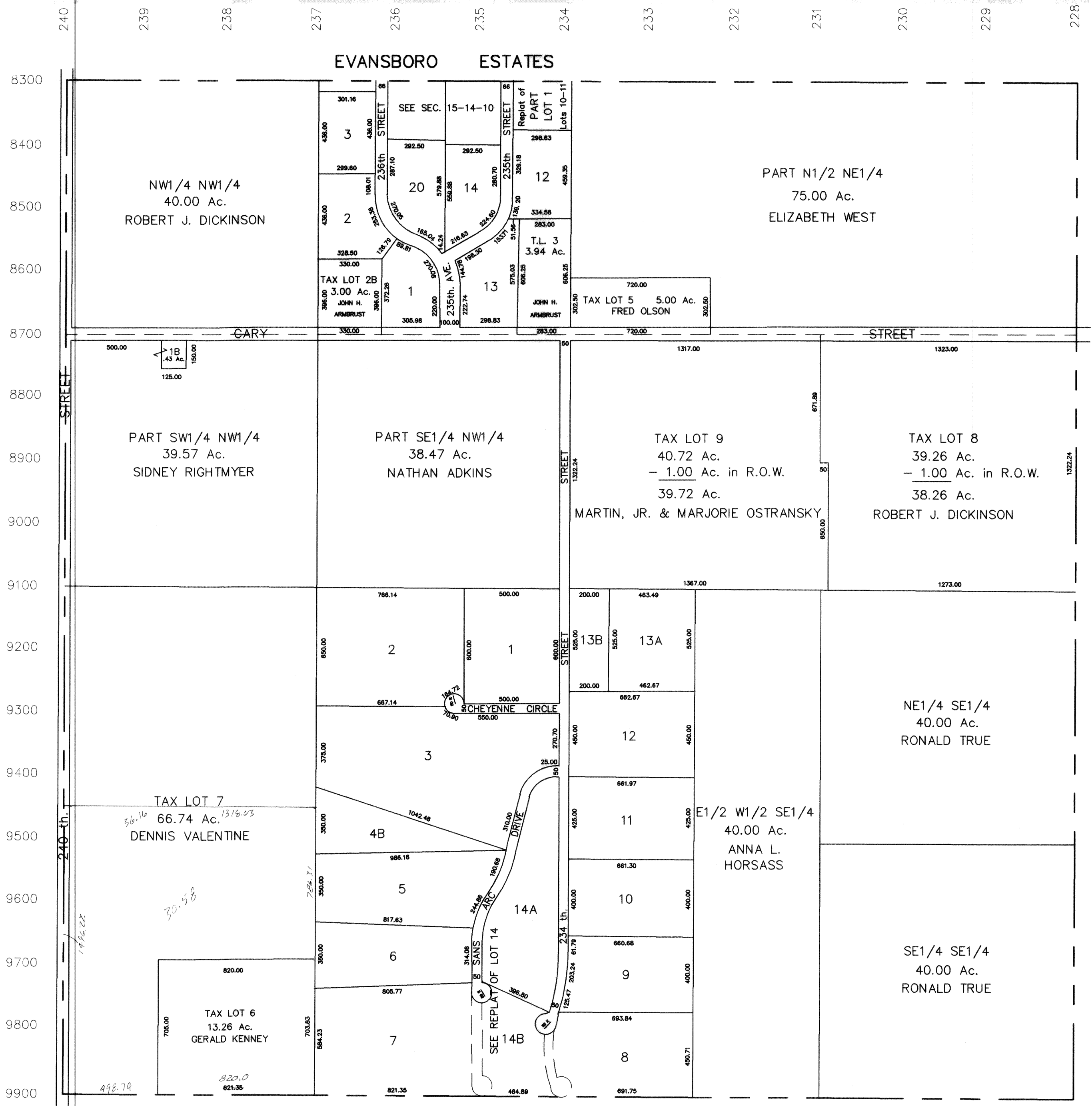


SEC. 22 T14N-R10E
SCALE 1" = 400'

1407-10



POINT SANS ARC

SARPY COUNTY
SURVEYOR'S OFFICE

REVISIONS

12-23-63	9-30-88
3-1-66	3-20-91
3-14-77	1-7-92
11-12-81	6-30-92
2-5-86	11-14-95-PLAT