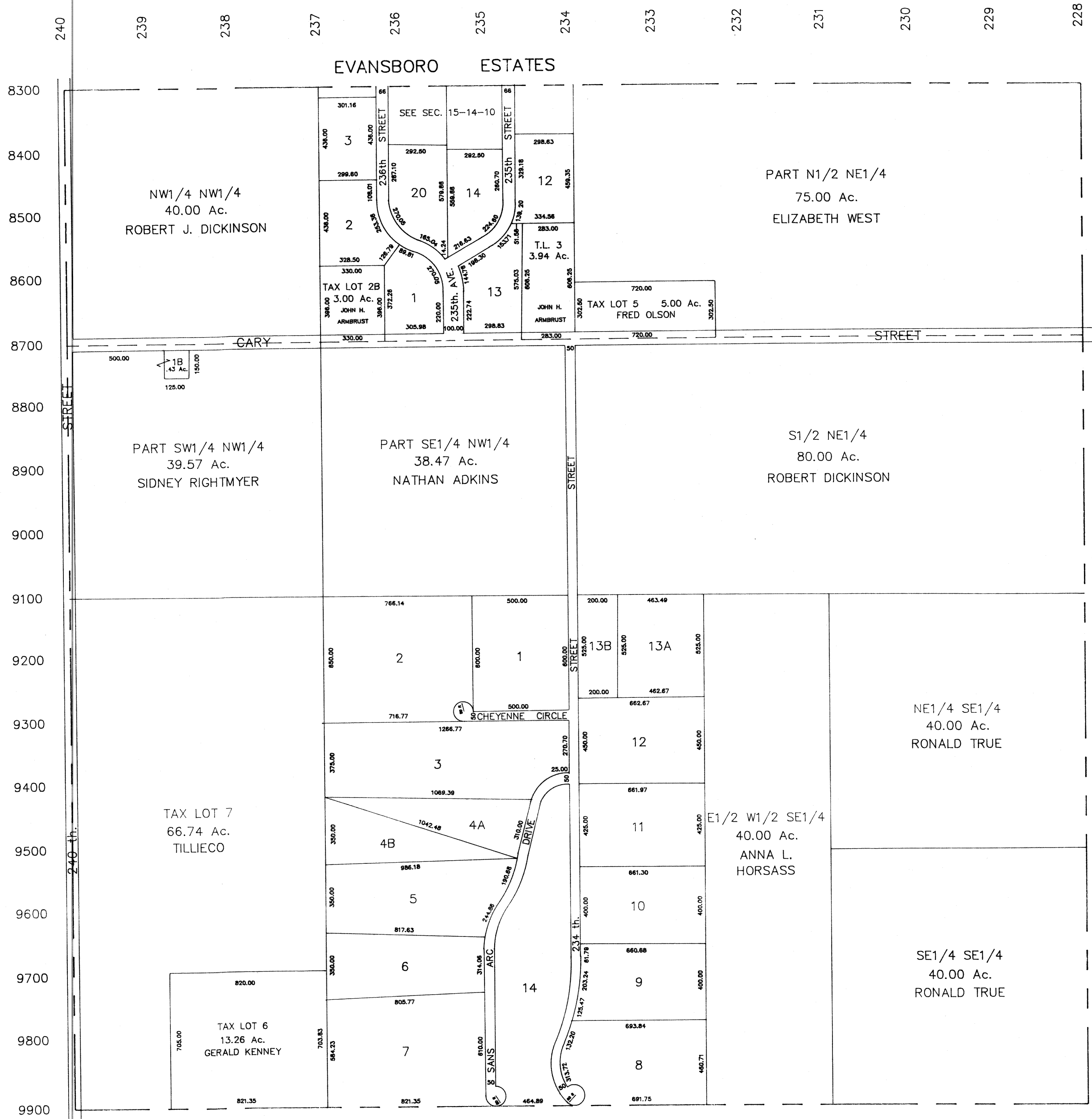


SEC. 22 T14N-R10E
SCALE 1" = 400'

RONALD A. RYSTROM
SARPY COUNTY SURVEYOR

1407-10



POINT SANS ARC

SARPY COUNTY SURVEYOR
FEBRUARY 1958

REVISED
12-23-63
3-1-66
3-14-77
11-12-81
2-5-86
9-30-88