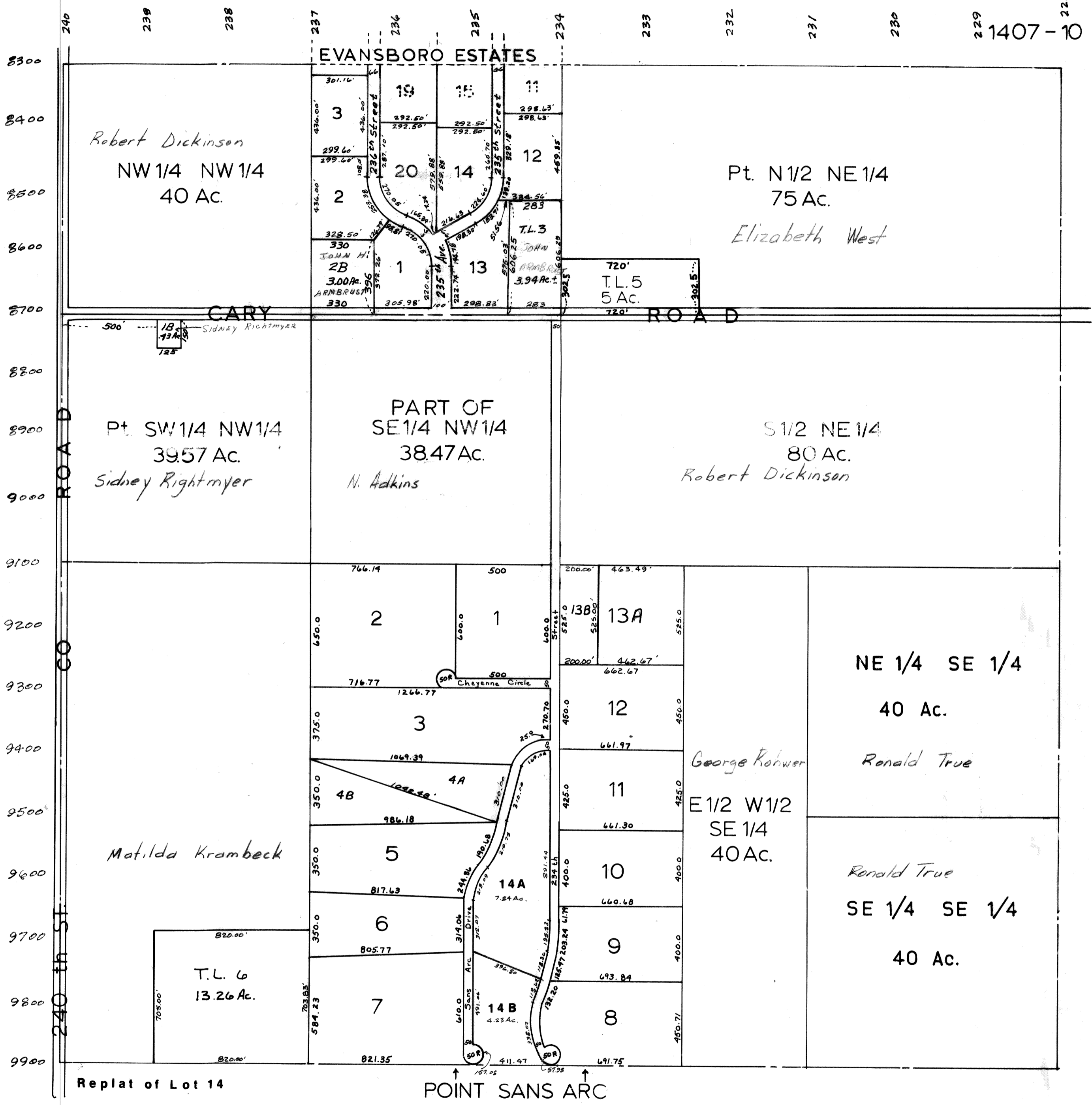


SEC.22-T14N-R10E
Scale -- 1" = 400'

1407-10



SARPY COUNTY SURVEYOR'S OFFICE
FEBRUARY, 1958

- REVISED
- 12 - 23 - 63
 - 3 - 1 - 66
 - 3 - 14 - 77
 - 11 - 12 - 81
 - 2 - 5 - 86
 - 9 - 30 - 88