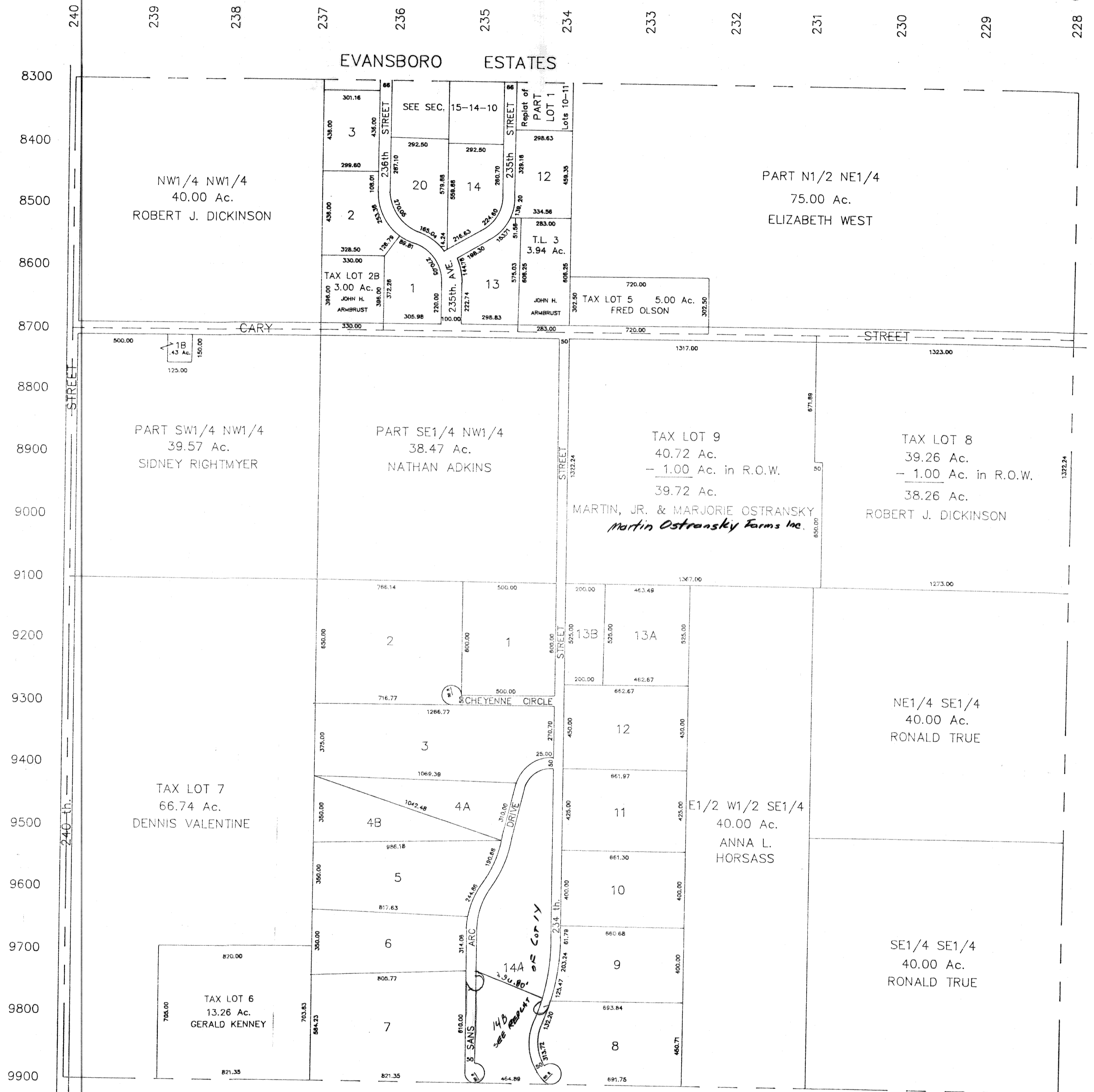


SEC. 22 T14N-R10E  
SCALE 1" = 400'

1407-10



POINT SANS ARC

SARPY COUNTY SURVEYOR  
FEBRUARY 1958

REVISED

- 12-23-63
- 3- 1-66
- 3-14-77
- 11-12-81
- 2- 5-86
- 9-30-88
- 3-20-91
- 1- 7-92
- 6-30-92