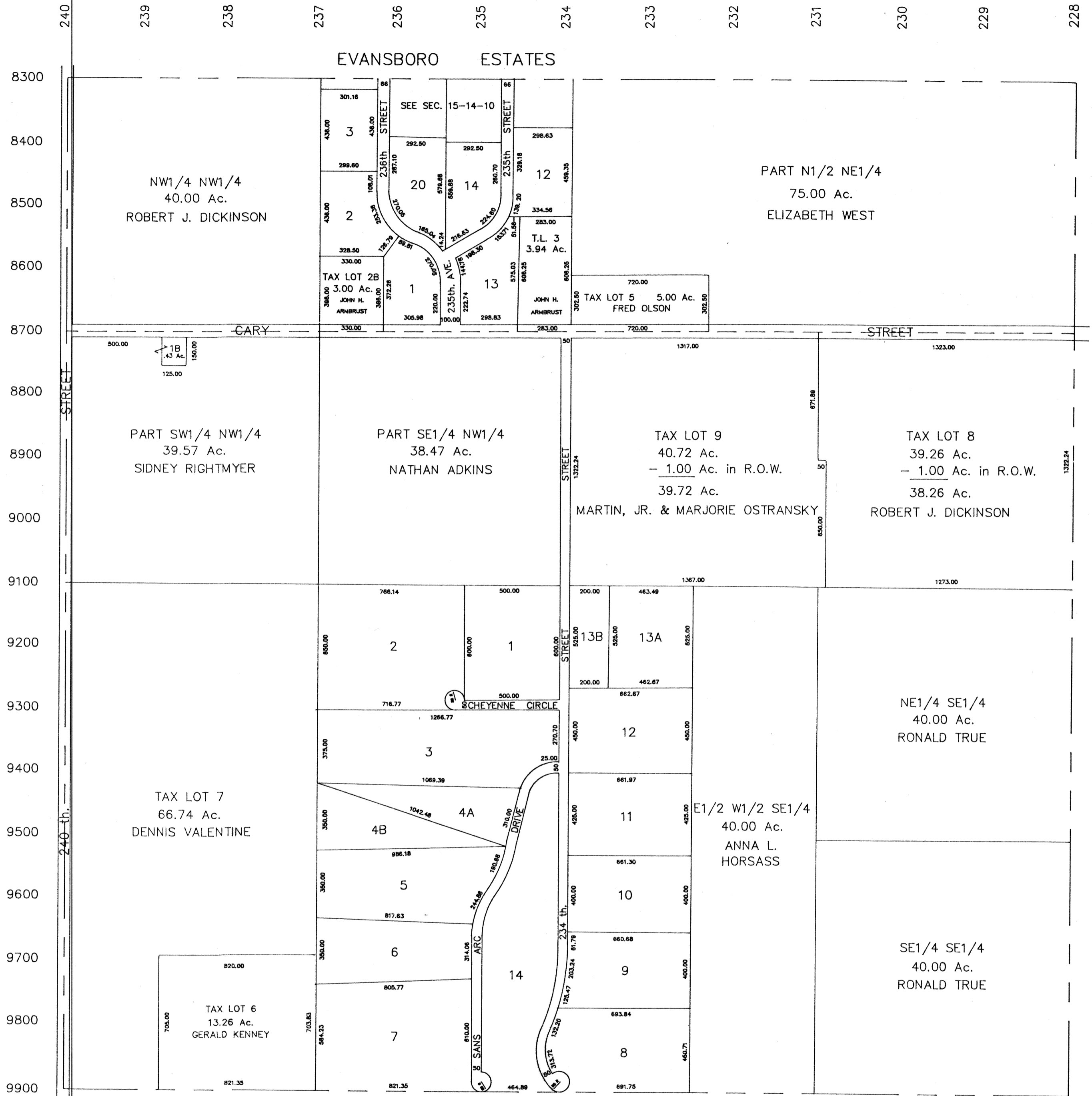


SEC. 22 T14N-R10E  
SCALE 1" = 400'

1407-10



POINT SANS ARC

SARPY COUNTY SURVEYOR  
FEBRUARY 1958

- REVISED
- 12-23-63
  - 3- 1-66
  - 3-14-77
  - 11-12-81
  - 2- 5-86
  - 9-30-88
  - 3-20-91
  - 1- 7-92