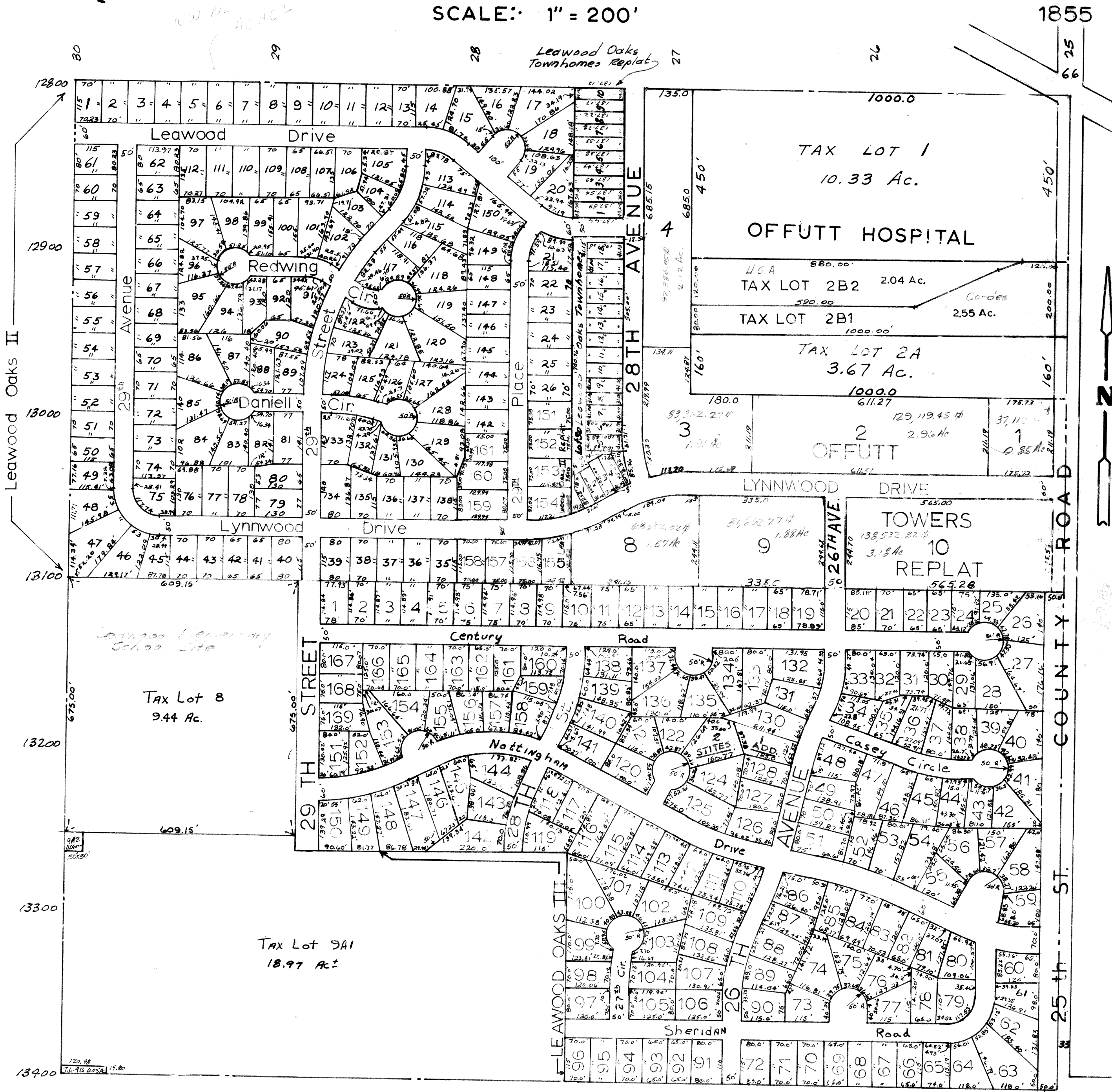


NE 1/4-SEC. 9-T13N-R13E  
SCALE: 1" = 200'



SARPY COUNTY SURVEYOR'S OFFICE  
NOVEMBER-1963

REVISED FEB. 1977  
JUNE 1977  
Aug. 1977  
SEPT. 1977  
May, 1983  
March 1989  
August 1989  
October 1990