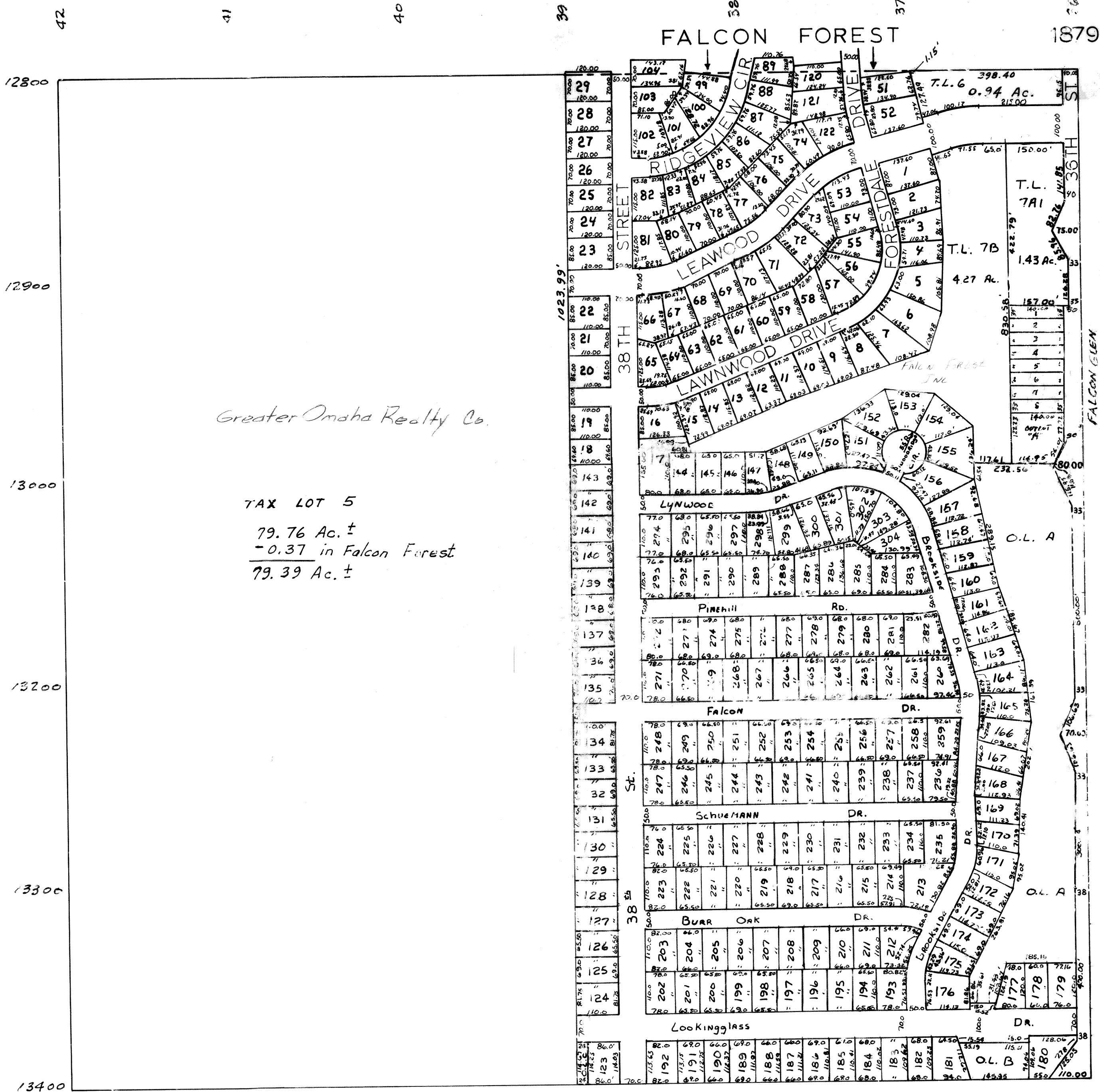


NE. 1/4 SEC. 8-T13N-R13E.
SCALE - 1" = 200'



Greater Omaha Realty Co.

TAX LOT 5
79.76 Ac. ±
- 0.37 in Falcon Forest
79.39 Ac. ±

SARPY COUNTY SURVEYOR'S OFFICE
OCTOBER - 1976

Revised
10-17-78
04-13-98 PLAT