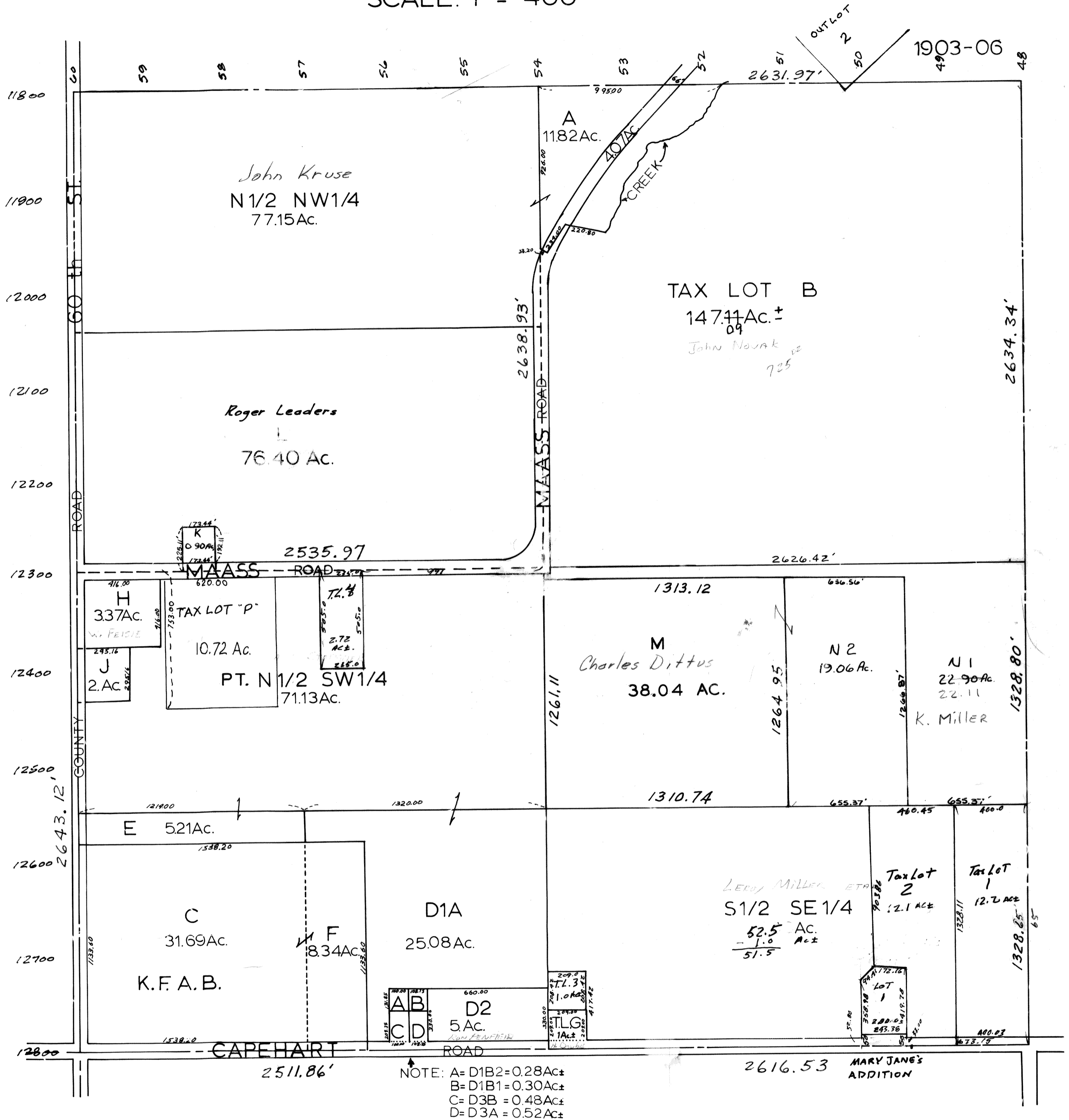


SEC. 6 T13N-R13E  
SCALE: 1" = 400'



SARPY COUNTY SURVEYOR'S OFFICE

1958 REVISED

JULY-1965

MARCH-1977

12-7-77  
8-17-79  
2-03-97 TL.  
3-28-97 Plat  
11-22-00-00-29919 ; 00-29921  
12-12-00 - 32037  
06-12-01 - 16940