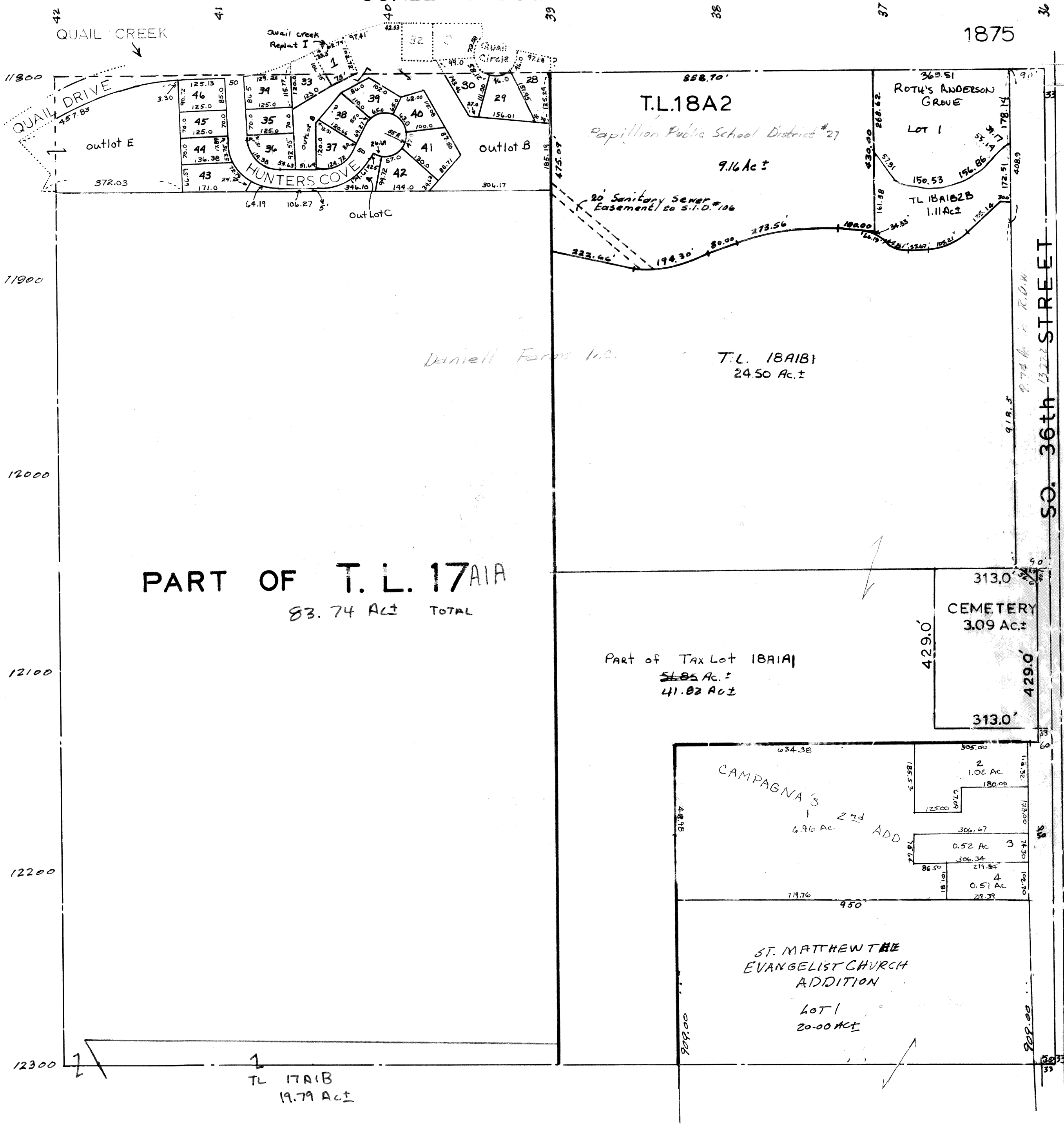


NE 1/4 SEC. 5-T13N-R13E.
SCALE - 1" = 200'



SARPY COUNTY SURVEYOR'S OFFICE
MAY, 1964.

REVISED
3-15-77
12-7-77
5-30-80
2-28-84
7-06-93
7-10-95-PLAT
8-14-98-PLAT
07-30-02-23273
03-04-03-PLAT