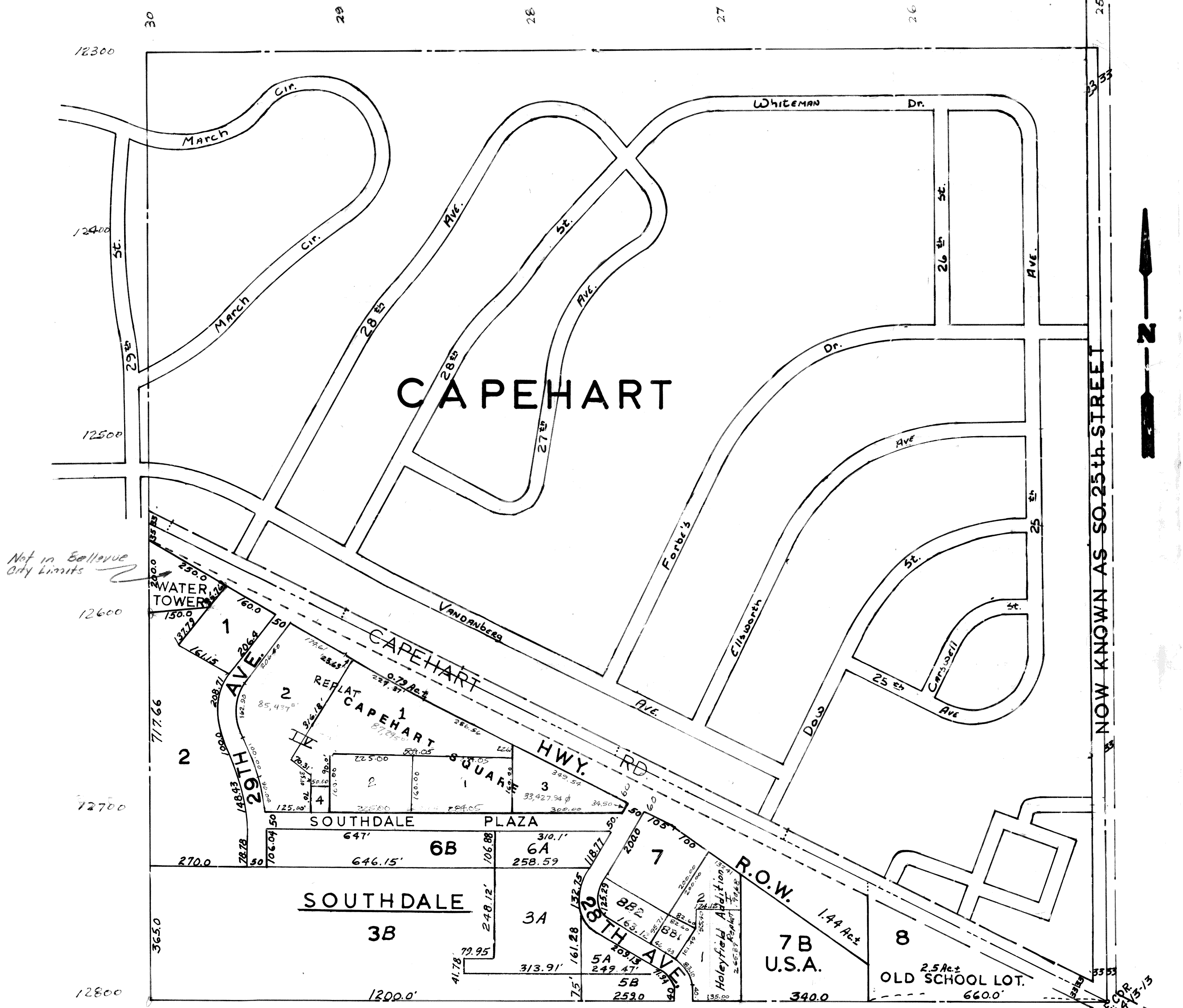


SE.1/4-SEC.4-T13N-R13E.
SCALE 1" = 200'

1853



Not in Bellevue City Limits

Capehart Square - Being a Replat of Lot 4, Southdale

Capehart Square II
Replat of Lot 1 into Lots 1 & 4

Bellevue City Limits (Leewood Oaks II)

SARPY COUNTY SURVEYOR'S OFFICE
APRIL — 1965

REVISED
 5/8/79
 6-6-90
 10-23-91
 1-6-92
 11-17-95 - PLAT
 2-7-97 - REPLAT
 1-6-99 - Replat

NOW KNOWN AS SO. 25th STREET

SECTION 4 T13N R13E