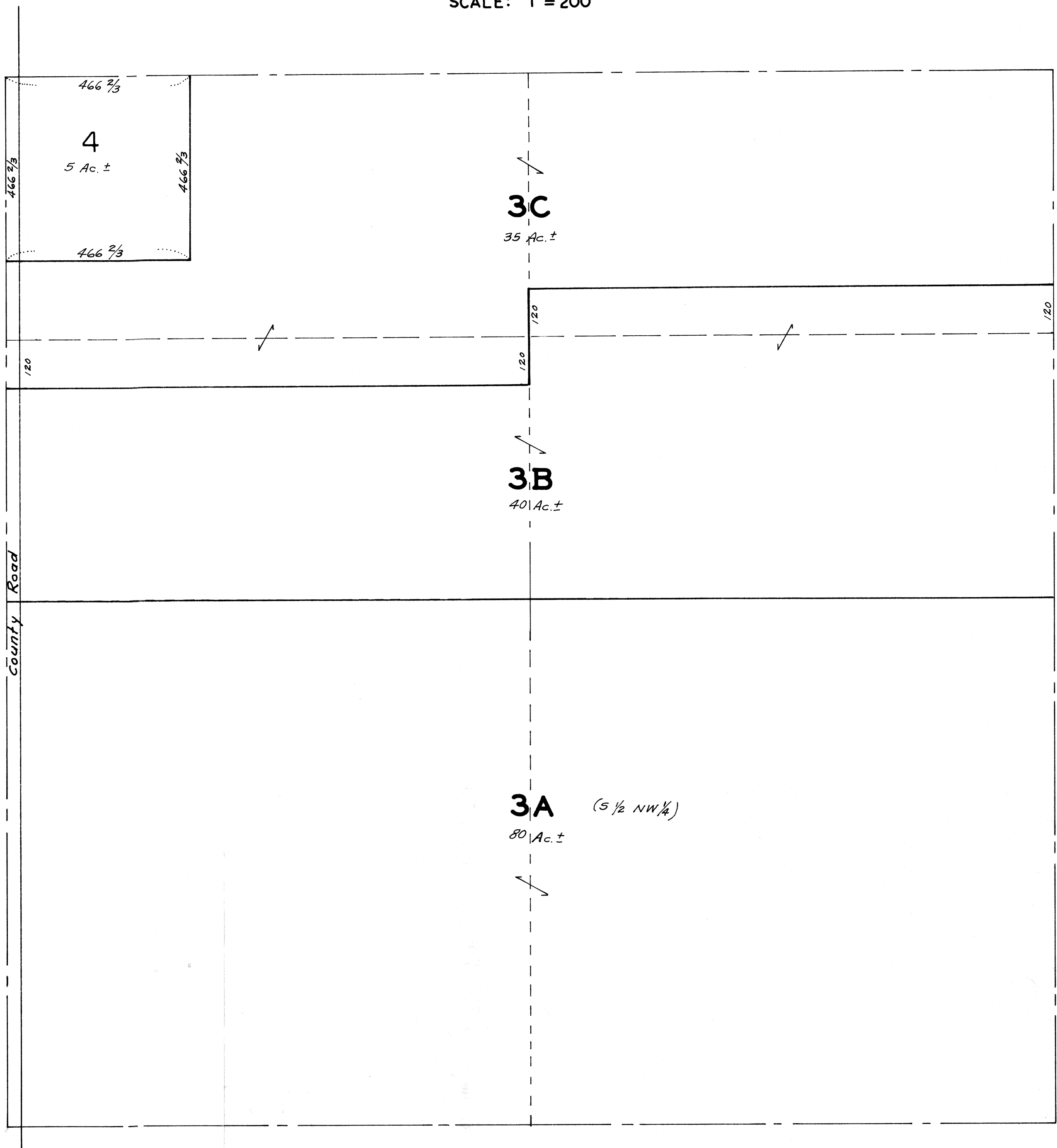


NW 1/4 SEC. 3 T13N-R13E

SCALE: 1" = 200'



NOTE: FOR DESCRIPTIONS OF TAX LOTS IN THIS 1/4 SECTION, SEE PAGE 88, TAX LOT RECORD BOOK # 2.

OFFICIAL PLAT  
SARPY COUNTY SURVEYOR'S OFFICE  
FEBRUARY, 1960  
F.I.W. - N.P.W.