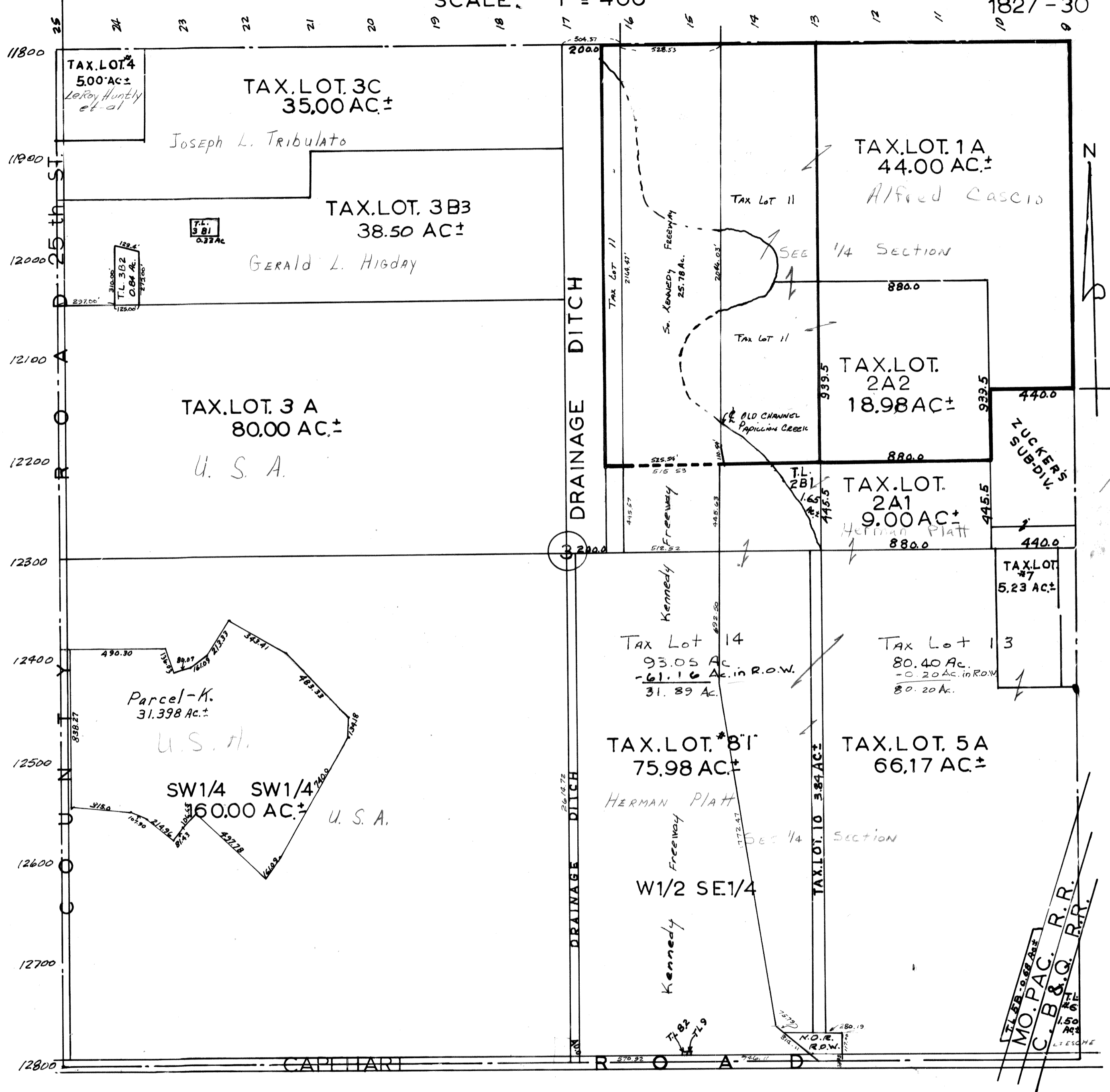


SEC. 3 - T13N - R13E
SCALE: 1" = 400'

1827 - 30



TAX LOT 13: TL'S 2A1, 5A, 7, 80.40 AC.
TAX LOT 14 TL'S 2B1, 3E, 8-1, 10, 93.05 AC

SARPY COUNTY SURVEYOR'S OFFICE
OCTOBER - 1961

Revised
2/3/89
10-5-89