

NOTE:
OUTLET #1
FOR USE BY
5112 FOR RA
PURPOSES

27

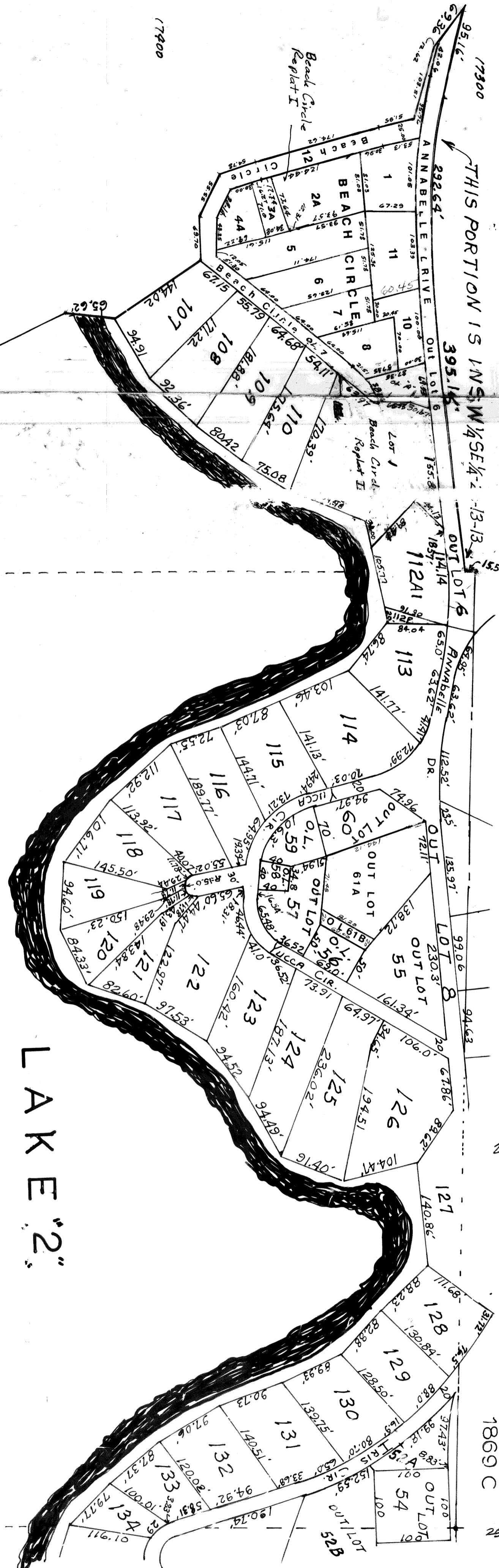
22

1869 C

2

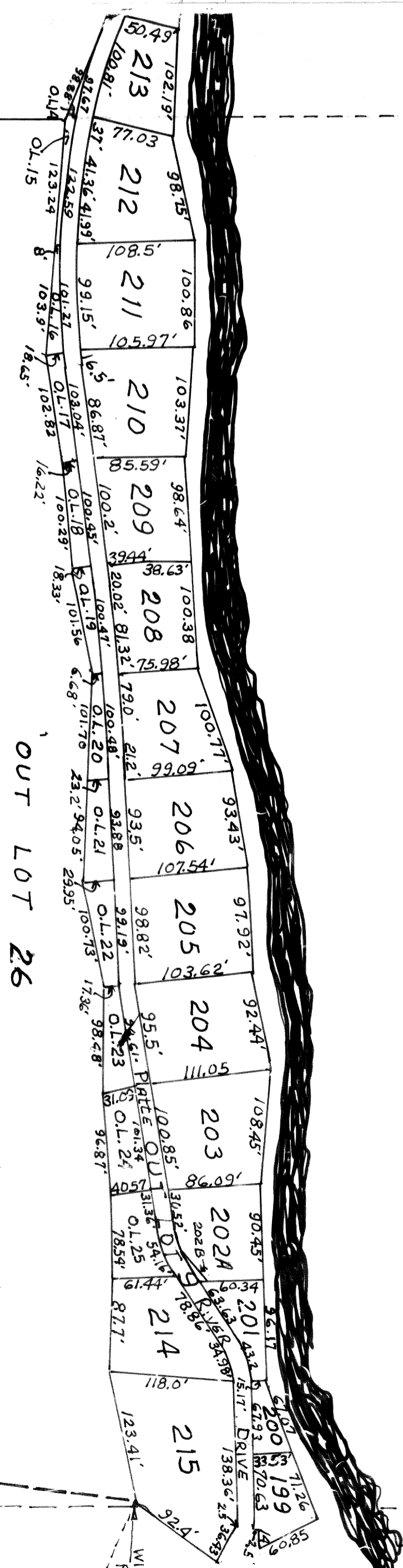
SE 1/4 SEC. 28-T13N-R13E.
SCALE - 1" = 100'

THIS PORTION IS IN S.W. 1/4 SEC. 2 - 13-13-

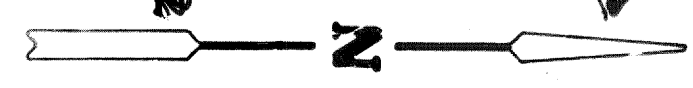
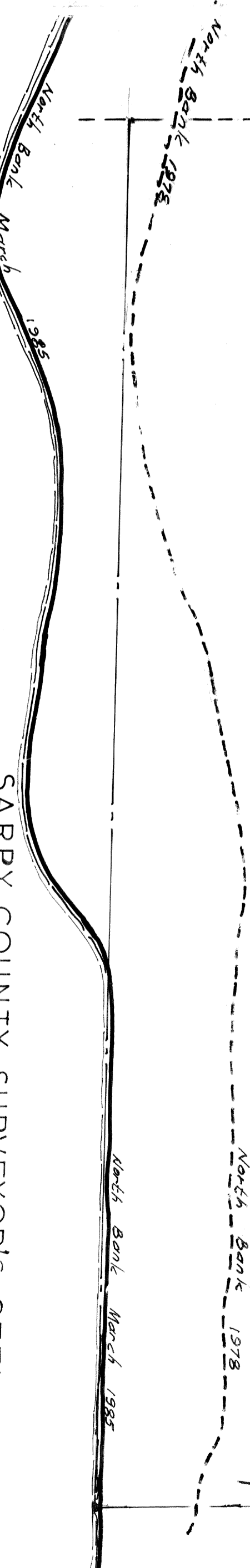


HANSON'S LAKES

LAKE "2"



OUT LOT 26



17500
17400
17600

SARPY COUNTY SURVEYOR'S OFFICE

JUNE - 1975
August - 1978
July 1984
April 1986
June 1986
12-08-90 E.L. Row
1-10-92 Plat