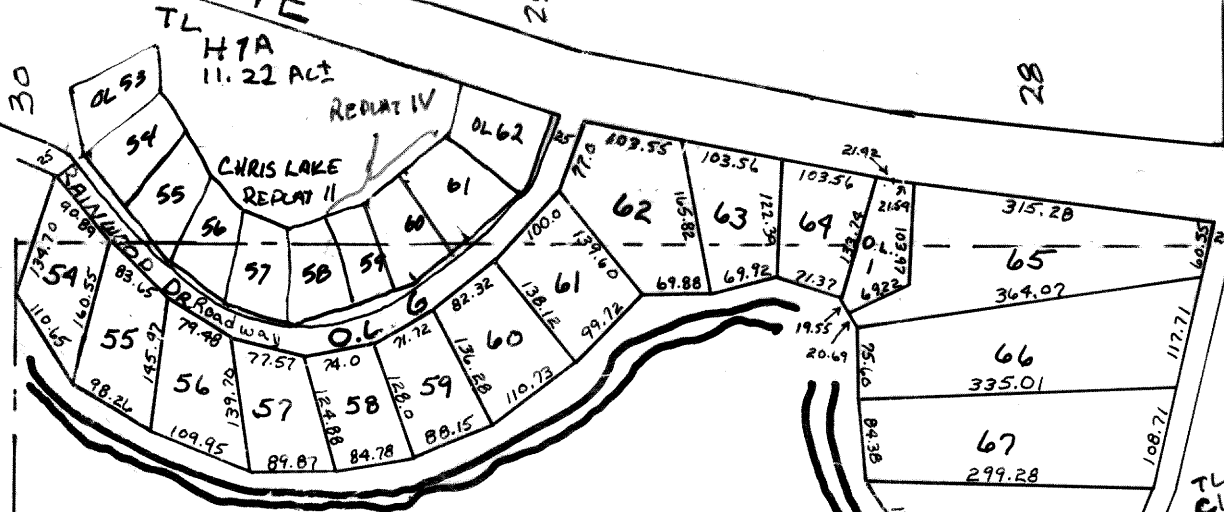


SE. 1/4, SEC. 28 T13N-R13E.
SCALE - 1" = 200'

LA PLATTE

1869

ROAD

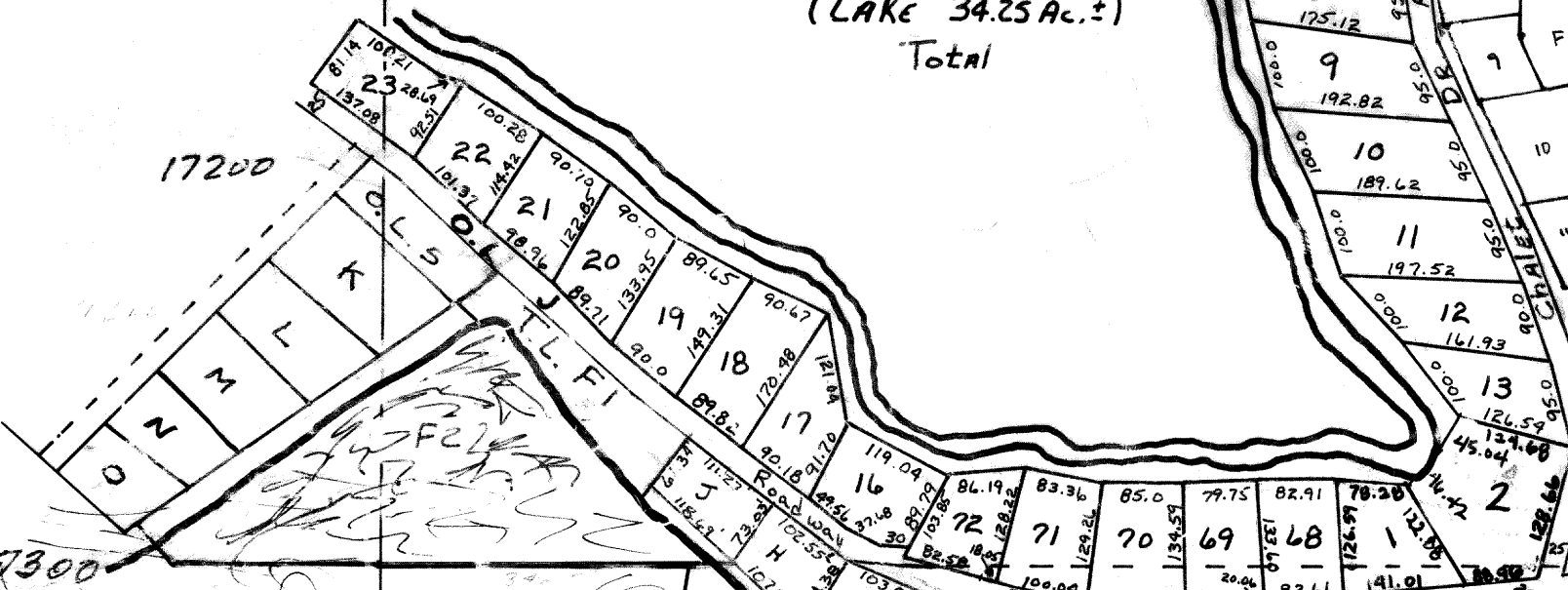


CHRIS LAKE

D
(LAKE 34.25 Ac. ±)
Total

3
925 Ac.

4
2645 Ac.

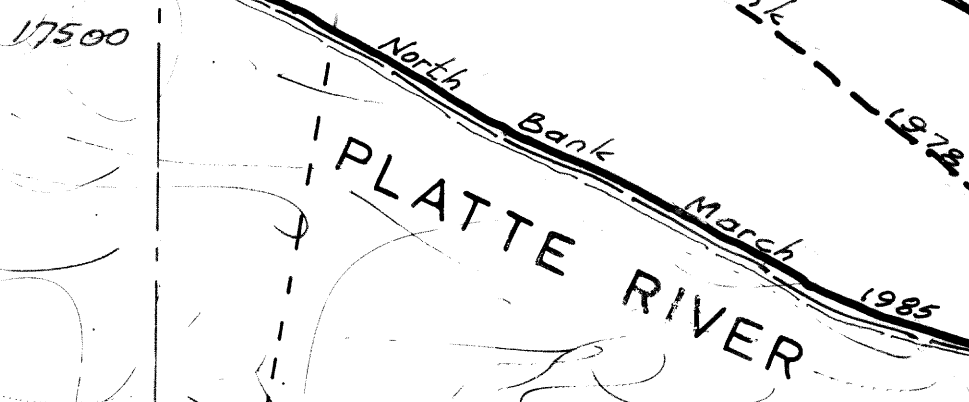


LARGE LAKE

6
1563 Ac.

5
7 Ac.

11



PLATTE RIVER

SARPY-COUNTY SURVEYOR'S OFFICE

NOVEMBER 1968

JUNE 1978
August 1978
August 1978
April 1986

11-10-03-PLAT
1-28-05-PLAT