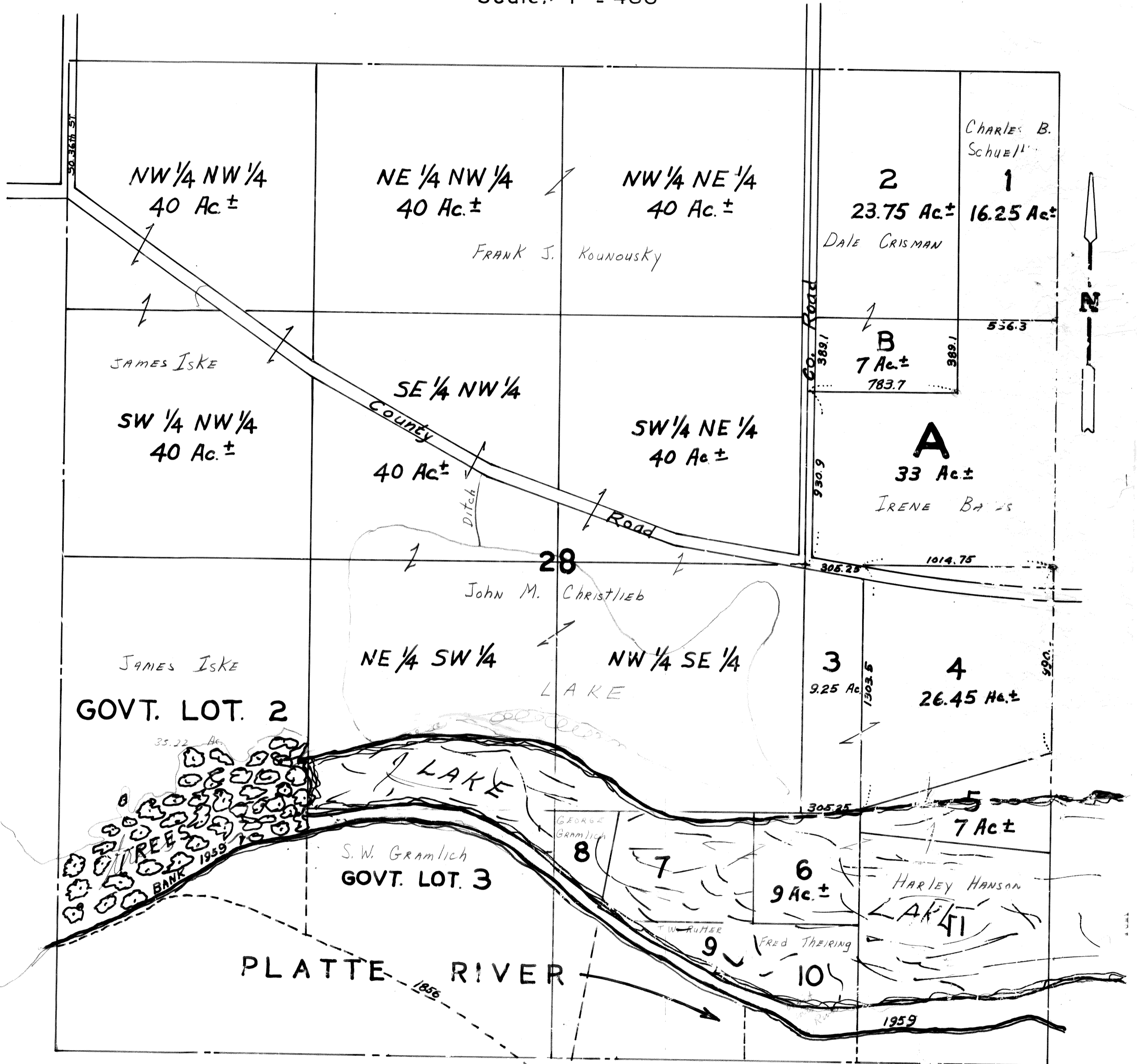


SEC. 28-T13N-R13E

Scale: 1" = 400'



NOTE:- THE DESCRIPTIONS OF TAX LOTS 3 TO 11 AS GIVEN IN THE VARIOUS DEEDS ARE SO CONFLICTING AND AMBIGUOUS THAT IT IS IMPOSSIBLE TO GIVE THE AREAS OR BOUNDARIES OF THESE LOTS WITH ANY DEGREE OF CERTAINTY

SO SEE TAX LOT RECORD BOOK #2 PAGES 108 & 109

See SE 1/4 sheet

SARPY COUNTY SURVEYOR'S OFFICE
JULY 1958