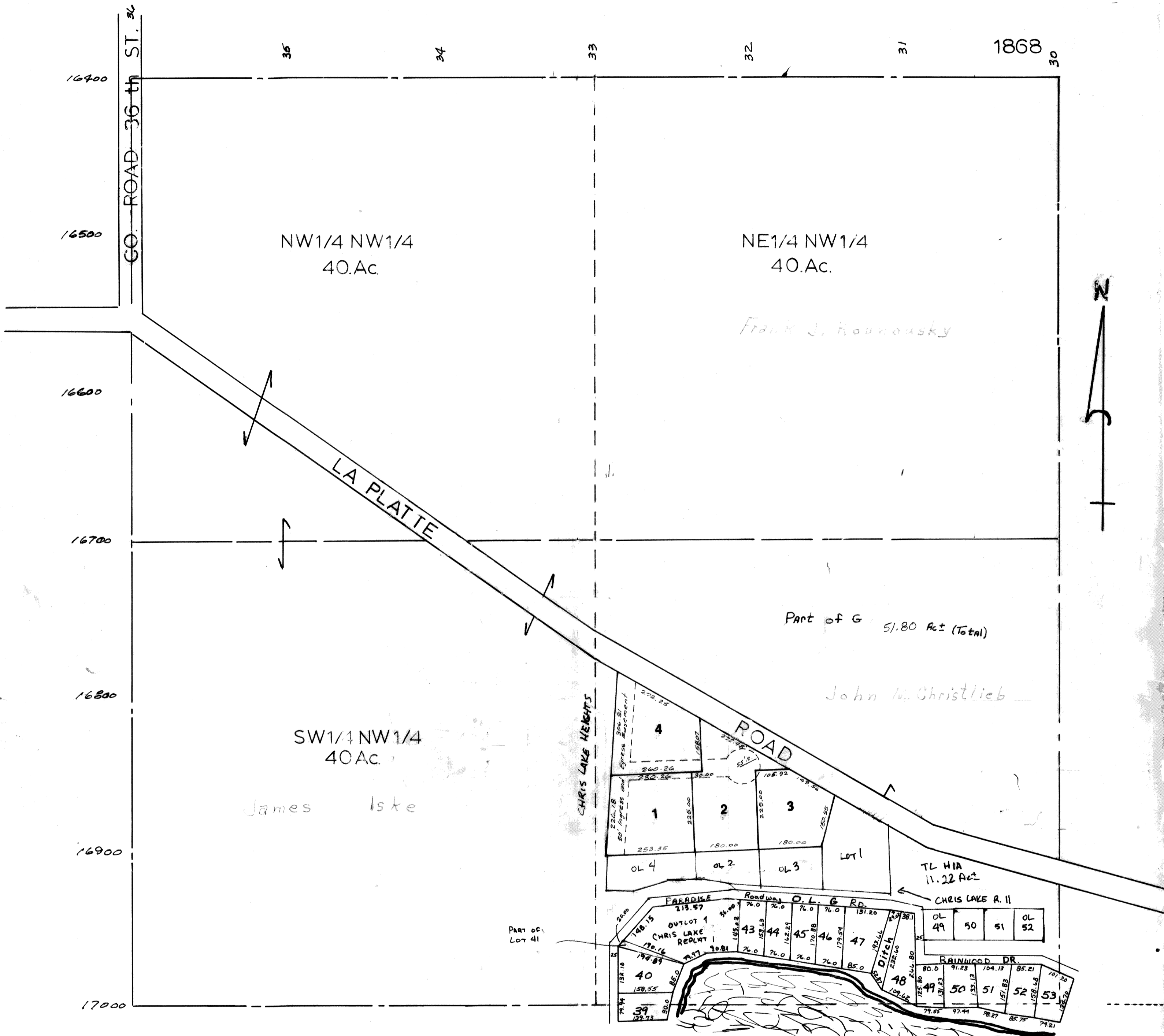


NW1/4 SEC.28 T13N - R13E

SCALE: 1" = 200'



SARPY COUNTY SURVEYOR'S OFFICE (LAKE, 34.25 Ac)  
MARCH 1971

REVISED  
3-16-71  
3-14-77  
3-28-90  
11-10-03-PLAT

CHRIS LAKE