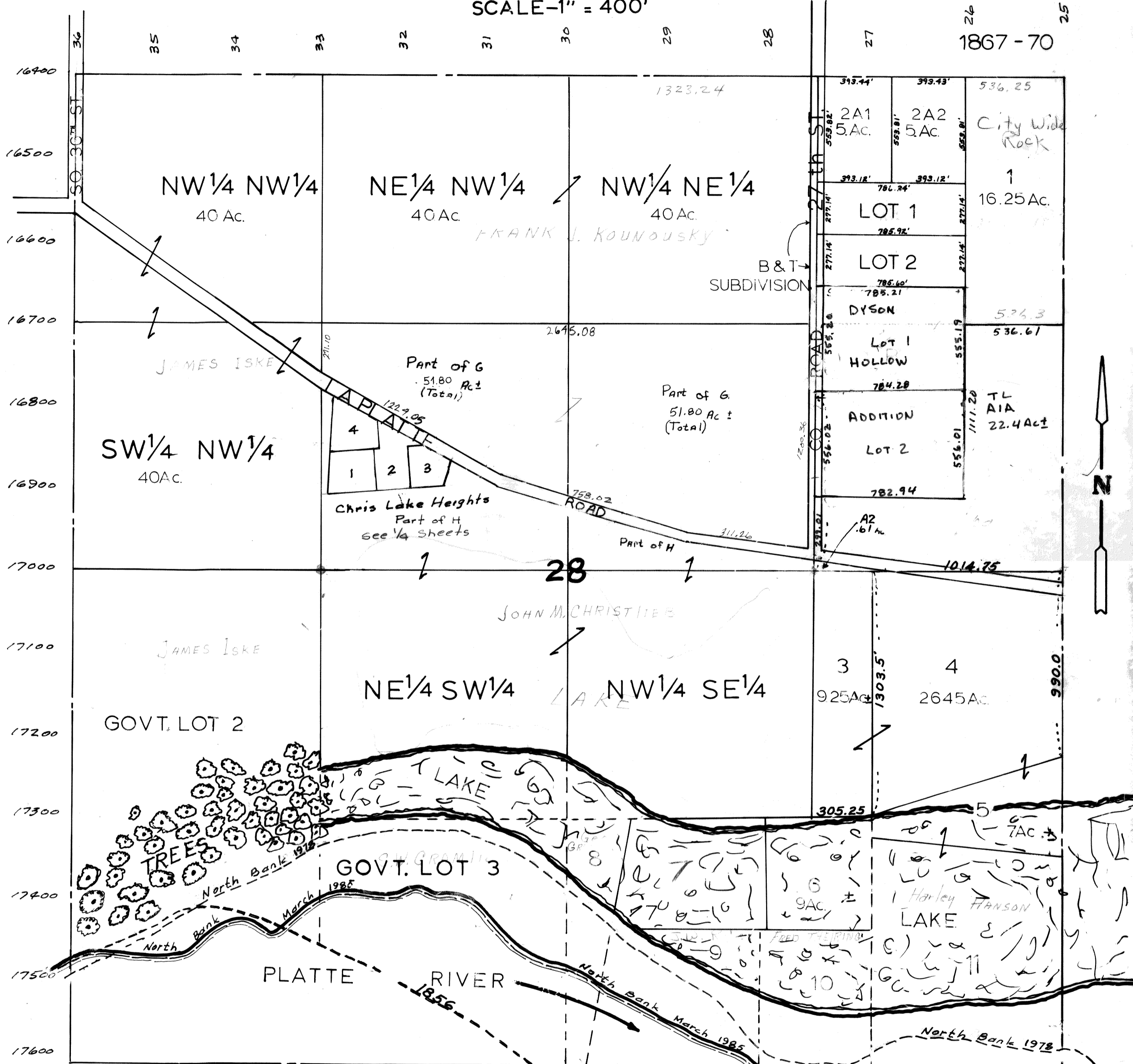


SEC. 28-T13N-R13E.

SCALE-1" = 400'

1867-70



NOTE: - THE DESCRIPTIONS OF TAX LOTS TO 11 AS GIVEN IN THE VARIOUS DEEDS ARE SO CONFLICTING AND AMBIGUOUS THAT IT IS IMPOSSIBLE TO GIVE THE AREAS OR BOUNDARIES OF THESE LOTS WITH ANY DEGREE OF CERTAINTY.

SD - SEE TAX LOT RECORD BOOK #2 PAGE 108 & 109.

SARPY COUNTY SURVEYOR'S OFFICE

ISLAND MARCH 1985 JULY-1958

REVISED
 1-19-63
 3-14-77
 8-9-78
 4-25-86

PLATTE RIVER
 South Bank March 1985

CASS COUNTY