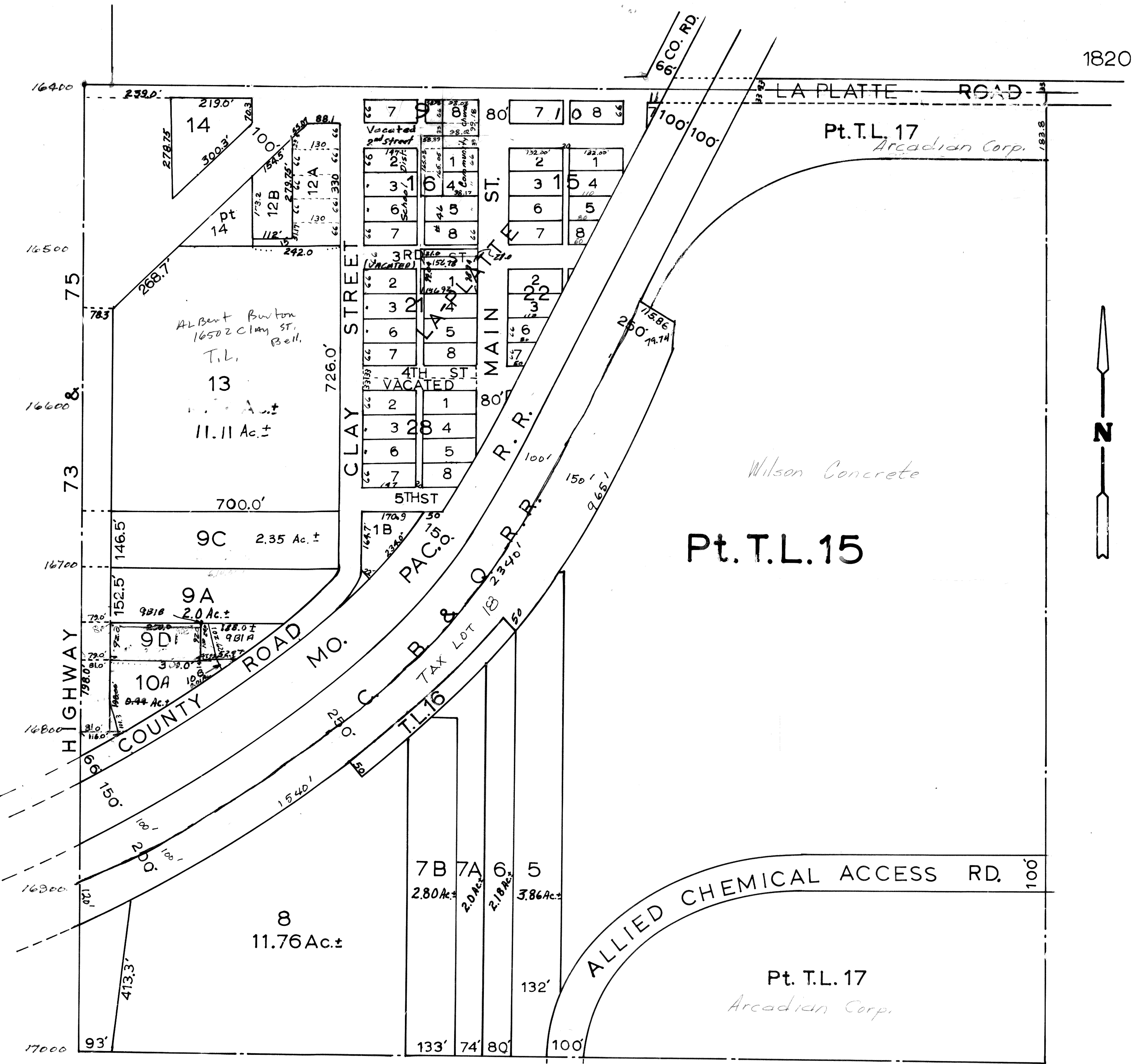


NW 1/4 SEC. 26-T13N-R13E.
SCALE—1" = 200'

1820



SARPY COUNTY SURVEYOR'S OFFICE
APRIL — 1965

REVISED

- 1-31-85
- 9-11-89
- 4-01-92
- 6-14-96
- 12-16-03
- 02-27-04 - 02543