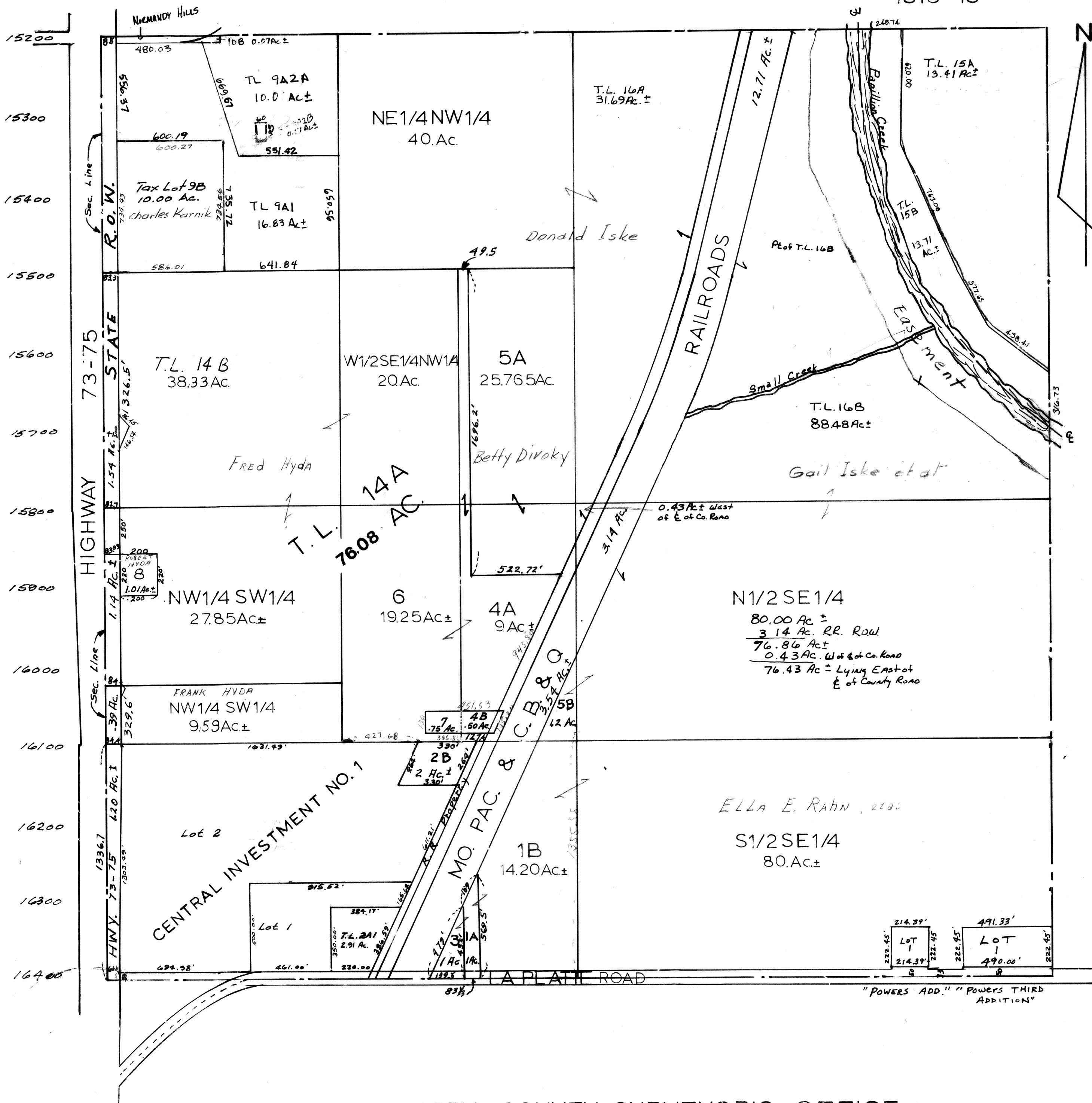


SEC. 23 T13N - R13E  
SCALE: 1" = 400'

1815-18



SARY COUNTY SURVEYOR'S OFFICE  
 TAX LOT 11: TL'S 1A, 1B, 3 & S1/2 SE1/4 96.2 AC. OCTOBER — 1958  
 TAX LOT 12: TL'S 2A, 2B 52.00 AC.  
 TAX LOT 14A: TL'S 4A, 6, NW1/4 SW1/4, W1/2 SE1/4 NW1/4 76.10 AC. ±

REVISED  
 3-14-77  
 4-15-86  
 2-13-91  
 6-16-99  
 5-24-00  
 08-08-02-24088  
 01-03-03-TL