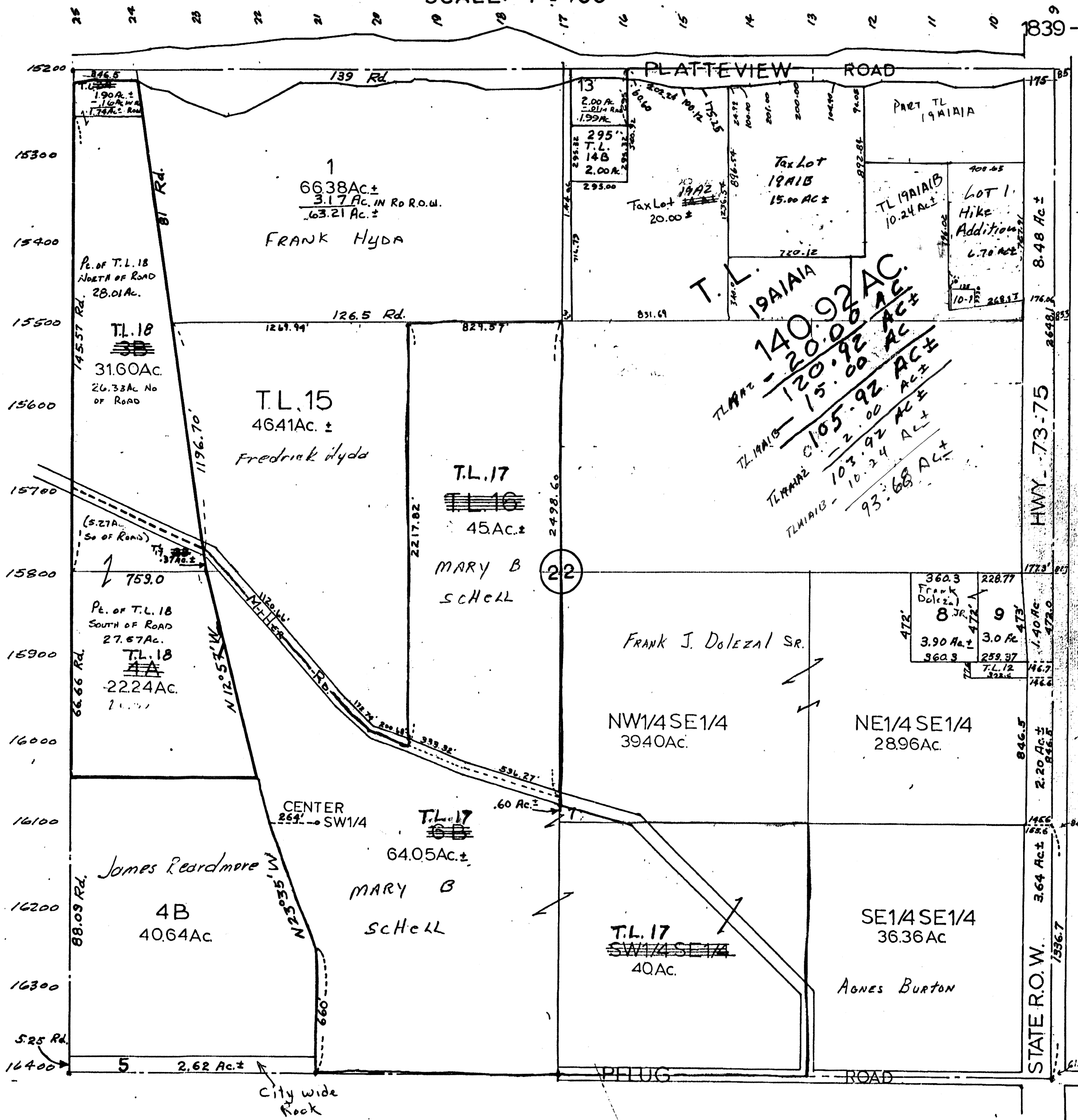


SEC. 22-T13N-R13E
SCALE: 1" = 400'



SARPY COUNTY SURVEYOR'S OFFICE
OCTOBER - 1958

TAX LOT 17: TL'S: 2B, 6B, 7, 16, &
SW1/4 SE1/4 150.02 AC ±
TAX LOT 18: TL'S: 3A, 3B, 4A. 55.58 AC ±
TAX LOT 19: TL'S: 11, 14, S1/2 NE 1/4 142.92 AC ±

REVISED - JANUARY - 1960.

REVISED
3-14-77
4-8-80
2-18-82
9-11-89
02-10-00 Taxlot Revisions
8-27-05-22238